

TECHTRASH

Team

FACULTY

Jessica Blaustein, School of Media Studies, The New School

URBAN MEDIA LAB SEMINAR

Bria Cole, Research Assistant, Media Studies

Colleen Doyle, Parsons Transdisciplinary Design

Ekaterina Efimova, Parsons Design and Technology

Nekoro Gomes, Media Studies

Carmel Pryor, Media Studies

Michael Riess, Media Studies

COLLABORATORS

Daniel Creahane, Media Studies

Thea Chaloner, Media Studies

Support

TECHTRASH is funded by a research seed grant from The New School Green Fund.

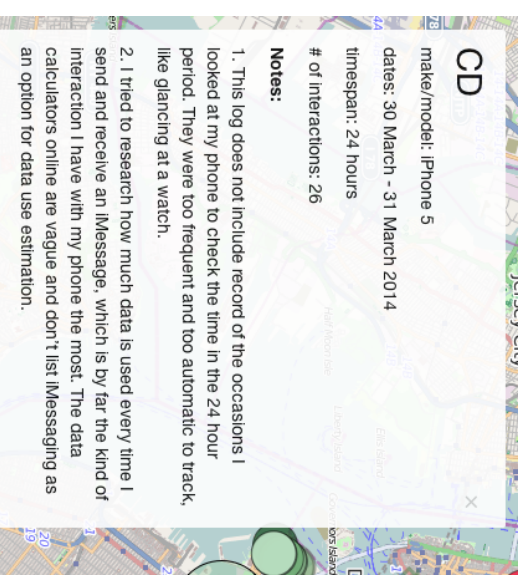
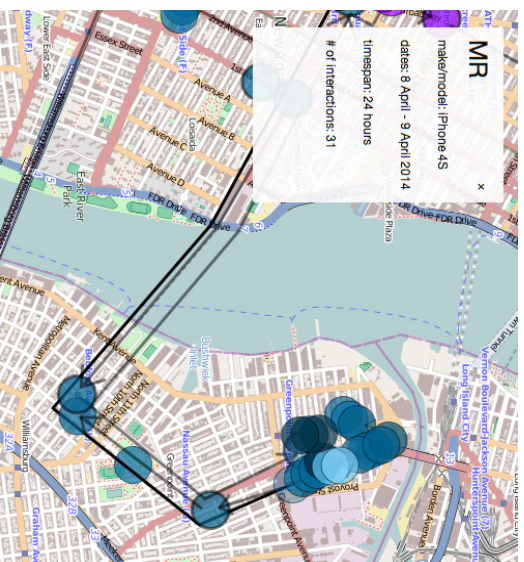
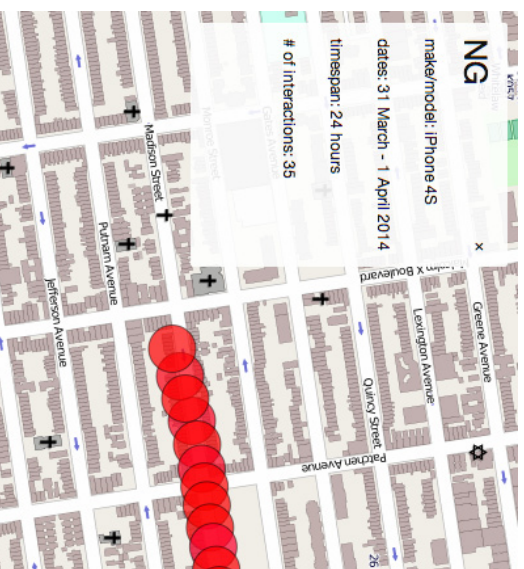
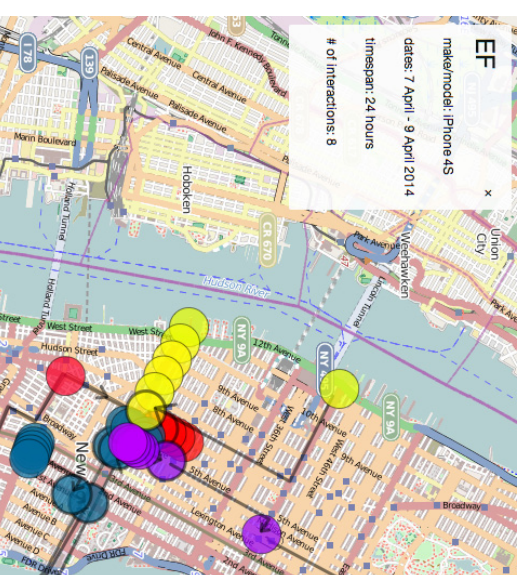
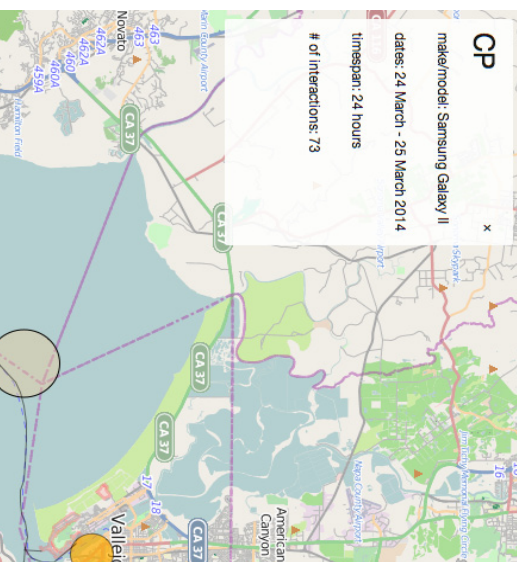
TECHTRASH looks at the bigger pictures of e-waste. Through the lens of that single ubiquitous device, the smart phone, the project investigates hi-tech waste as a complex form of trash and a fundamental component of broader cycles of information production, distribution, and consumption in the global cultural economy.

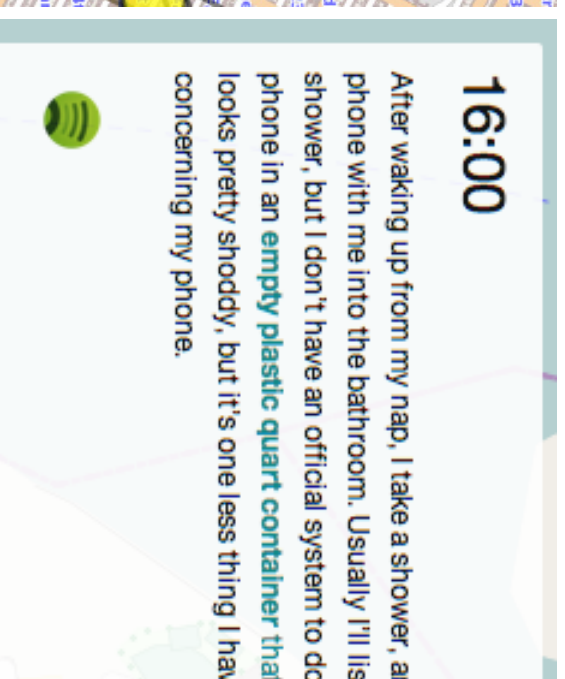


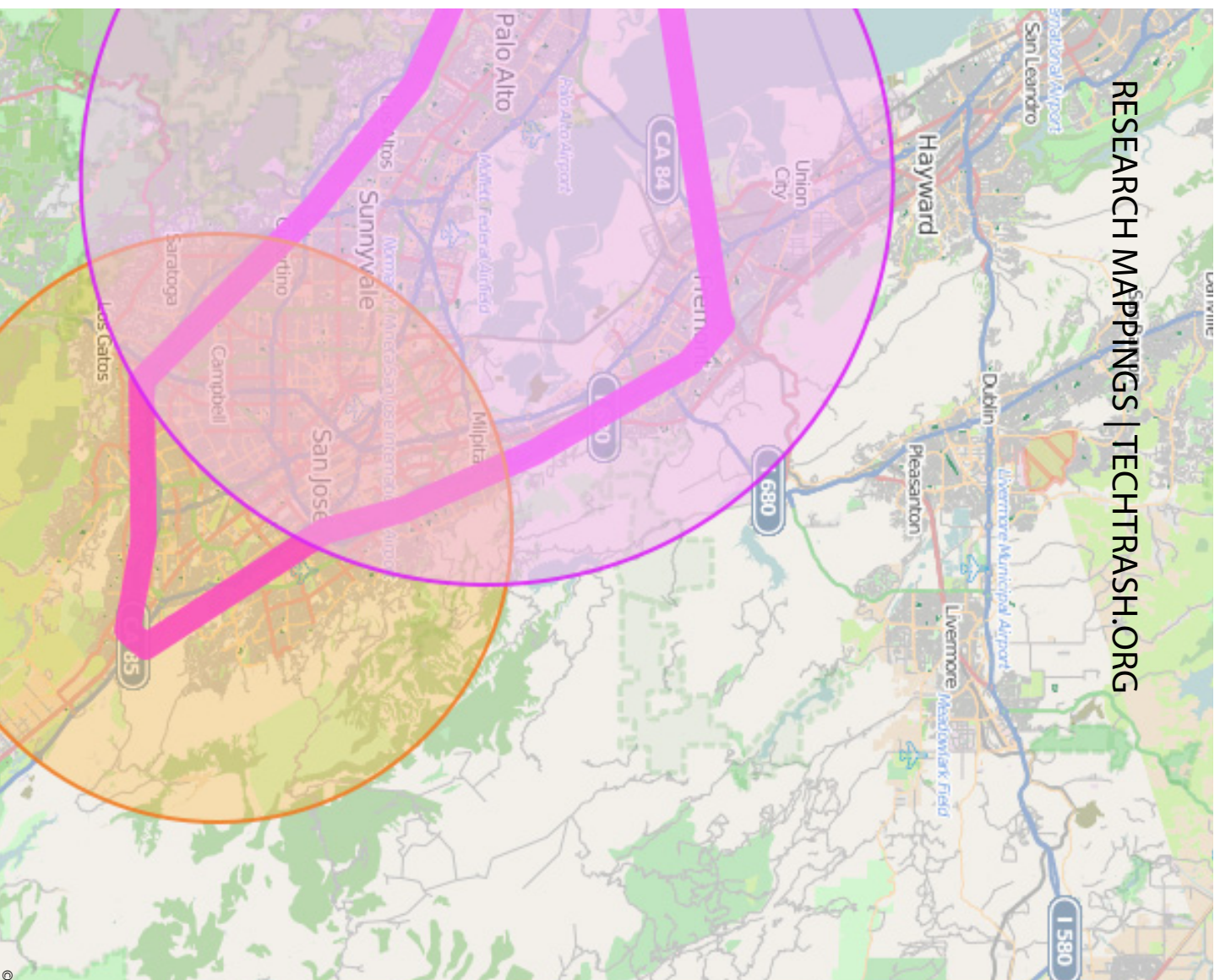
23rd Street (C,E)



MOBILE PASSAGES record and map 24 hours of interactions between six users and their smart-phones. The majority of these interactions are utterly familiar and banal. As daily habits, they tend to go unscrutinized. On display, they are given a second thought and begin to connect to deeper research investigations.







Behind the Magic...

Geographies of the Instantaneous

The Gigantic Footprint of the
Microchip

CLEAN is a Complex Chemical and
Cultural Production

New International Division of Labor
(NIDL)

Planned Obsolescence

The Invention of Pervasiveness
Monstrous Hybrids

Alternative Manufacturing Models

Detecting Good Manufacturing
Practices

RESEARCH MAPPINGS are student-led research investigations into the broader social, cultural, economic, and environmental contexts of smart-phone design, manufacturing, packaging, consumption, and disposal.

START HERE	Mobile Passages	Research	Exhibition	AV	Reference Library	About
------------	-----------------	----------	------------	----	-------------------	-------

THE BIG IDEAS

How do our everyday interactions with our smart phones connect to bigger social, economic, and environmental issues? What are the relationships between our mobile devices and transportation infrastructures, for example? Between our smart phone packages and cultural attitudes towards dirt or disease? Between our personal data streams and rapid urbanization in India and China? Or between our information consumption patterns and global supply and removal chains? In this section, you will find map-based research investigations into these connections and others, developed by students in the Spring 2014 Urban Media Lab in The School of Media Studies at The New School.

OBJECT/MATERIAL, Ekaterina Efimova > the device itself, its conception and design, its engineering and coding, its material composition and sourcing...

MANUFACTURE, Bria Cole > making and distribution, manufacturing and land use, work and labor, planned obsolescence...

PACKAGE, Michael Reiss > packaging and the culture of convenience, disposability, upgrades, marketing and propaganda, greenwashing...

DATA STORAGE, Nekoro Gomes > data consumption and data infrastructures, memory, storage, cloud computing...

DATA EXHAUST, Carmel Pryor > information management, privacy, surveillance...

DISPOSAL, Colleen Doyle > e-waste management, recycling, infrastructures for reuse...

EXHIBITION | OBJECT LESSON



TECHTRASH

A tactile toolkit for physical exhibition, the OBJECT LESSON unpacks and recreates the iPhone box as a critical media object.

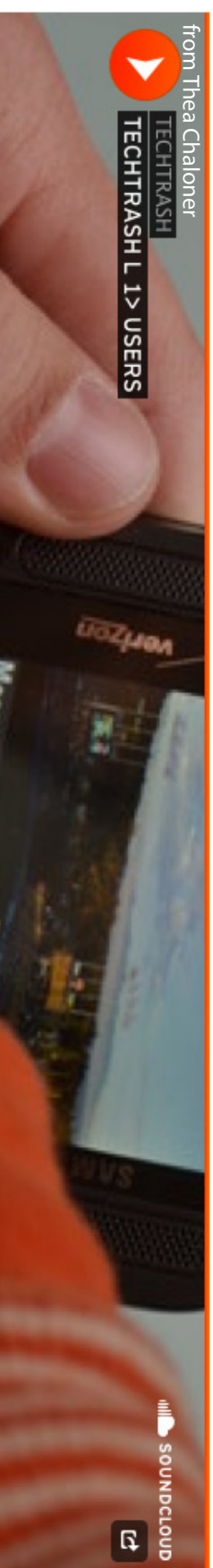


Hand-crafted and comprising several interactive components, the OBJECT LESSON is built to last and designed to circulate.





Listen



Watch



[Garage and Laptop Recycling](#) [How to Recycle Old Cell Phones](#) [Leak Outages](#) [Diesel Power](#) [Air Pollution](#) [Electric Light and Power](#) [McKinsey & Co](#) [Y&R](#) [Energy](#) [Energy](#) [Recycling](#) [Computers and the Internet](#) [Data](#)

[hstan China](#) [Freight \(Cargo\)](#) [Railroads](#) [Laptop Computers](#) [Ships and Shipping](#) [Hewl](#) [Jones and Telecommunications](#) [Wireless Communications](#) [Department of Informati](#)

[Waxman Mitch](#) [Water Pollution](#) [superfund](#) [Newtown Creek \(NYC\)](#) [Waste Ma](#)

[nment ruin porn](#) [Fabifi](#) [MetaReciclagem](#) [Conflict-Free Smelter Program](#) [Global e](#) [Frank Act](#) [Bricophone](#) [diametric](#) [human rights](#) [War Crimes](#) [Genocide and Crimes A](#) [orated Energy and Power](#) [Greenpeace](#) [Alternative and Renewable Energy](#) [You Can](#) [TAXI.com](#) [sheep art](#) [metal and minerals](#) [dematerialization](#) [waste systems](#) [critical](#)

[ardous and toxic substances](#) [Brooklyn \(NYC\)](#) [Manhattan \(NYC\)](#) [Lower E](#)

[Materials](#) [Phonebloks](#) [modular phone](#) [Distributed Manufacturing](#) [ifixit](#) [disposable](#) [mental concerns](#) [user friendly](#) [components](#) [repair](#) [Design](#) [DIY](#) [cloud](#) [ecocentric](#) [sme](#) [my carbon](#) [Internet](#) [Apple](#) [Energy](#) [Corporate](#) [social responsibility](#) [Activism](#) [Comput](#) [erce](#) [Microsoft](#) [Pollution](#) [Coal](#) [Renewable energy](#) [Business](#) [World news](#) [Fossil fuel](#) [s](#) [Cell Phones](#) [Vancouver](#) [Camouflage](#) [and Fake Trees](#) [infrastructure](#) [Metals and](#) [opelorCongo.org](#) [Sex Crimes](#) [Intel Corp](#) [Enough Project](#) [Accra \(Ghana\)](#) [Chemicals](#)

[/clic](#) [Hydrocarbons](#) [Aromatic](#) [Polychlorinated Biphenyls](#) [Nervous System](#) [Metals H](#) [nmental Exposure](#) [Electronic Waste](#) [Child](#) [Adult](#) [Humans](#) [Halogenated Diphenyl](#) [Eth](#) [nmental Protection](#) [Agency](#) [tracking](#) [mobile](#) [ios](#) [hidden data](#) [Big Data](#) [mobile data](#) [ts](#) [supply chain](#) [city of systems](#) [uo](#) [video](#) [planning](#) [how stuff works](#) [trash](#) [Consum](#) [on Oil \(Petroleum\)](#) [and Gasoline](#) [Regulation and Deregulation of Industry](#) [Reform an](#) [BP Plc](#) [Biofuels](#) [Cattle](#) [Agriculture](#) [Farmers](#) [Hewlett-Packard Co](#) [Manure](#) [interview](#) [ppment corporation](#) [exhibition](#) [urban exploration](#) [disposal](#) [recycling](#) [computer recyc](#) [onic recycling](#) [nyc](#) [electronics recycling](#) [nyc](#) [electronics recycling](#) [new york](#) [compu](#) [ing](#) [nyc](#) [brooklyn](#) [bridge park](#) [libraries](#) [co-op](#) [city](#) [call for](#) [entireties](#) [total](#) [data](#) [share](#) [new](#) [york](#)

The REFERENCE LIBRARY is a curated and searchable database of references including journal articles, books, news clippings, films, and industry sources on the topic of e-waste and the ecological footprints of digital information technologies.

START HERE

Mobile Passages

Research

Exhibition

AV

Reference Library

Archives

BROWSE ITEMS (219 TOTAL)

Browse All

Browse by Tag

Search Items

<

2 of 22

>

Stim & dross:
rethinking the
metropolis

Hygeia, a city of
health

Material

Manufacture

Package

Community Resources

Industry Sources

MATERIAL

Wasting Away

COLLECTIONS

Material

Manufacture

Package

Data

Information Mar

Other Great Projects

Information Management

Disposal

Theoretical Backgrounds

TECHTRASH was conceived and initially developed through Urban Media Lab: Waste, a graduate-level seminar in the School of Media Studies at The New School. Urban Media Labs are project-based seminars focused around specific urban conditions. Approaching the city as an irreducible density of people, built environments, and information architectures, students explore a single topic from multiple disciplinary and media perspectives, and they collaborate on a final project for publication and/or exhibition. The seminars are structured around a combination of theoretical inquiry and site-specific case studies, and students are encouraged to use New York City as a laboratory for their expanded research and intervention.

URBAN MEDIA
LAB: WASTE

SEMINAR OVERVIEW
SCHEDULE + READINGS
REQUIREMENTS
URBAN RESEARCH GUIDE
TECHTRASH
REFERENCE
CONTACT
NEWS AND EXTRA



RECENT COMMENTS

Bria Cole on Label for Protective Gloves
Carmel Pryor on Label for Protective Gloves
michaeljpress on Label for Protective Gloves



Contact

For more information, or to arrange exhibition of the OBJECT LESSON,
contact Jessica Blaustein at blaustej@newschool.edu.

