

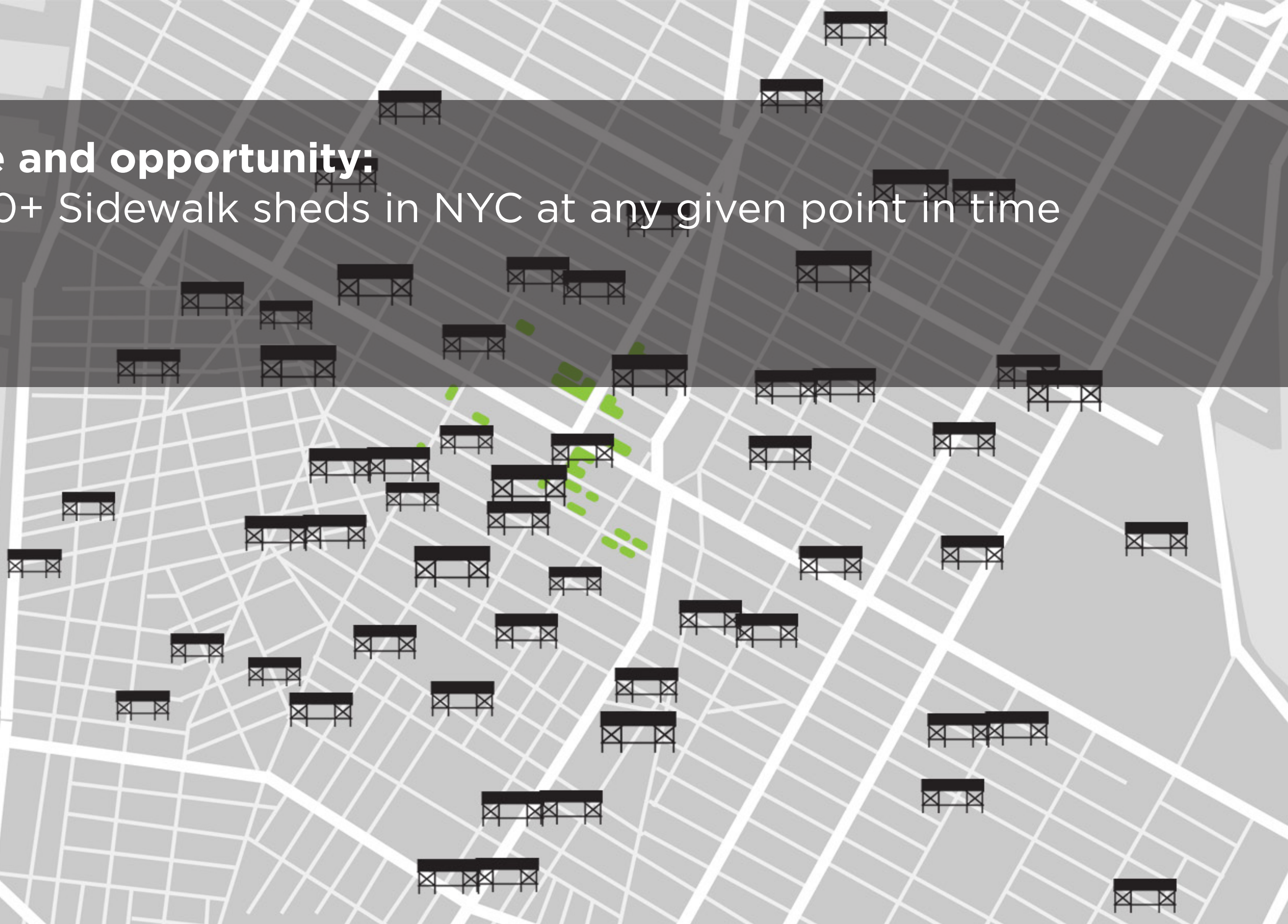


TEMPORARY IS THE NEW **PERMANENT**

Bland Hoke and Howard Chambers
Parsons the New School for Design, NYC



Scale and opportunity:
6,000+ Sidewalk sheds in NYC at any given point in time



3 IDEAS

Small changes
= Big effects

Innovate within
existing infrastructure

Placemaking and
design for people



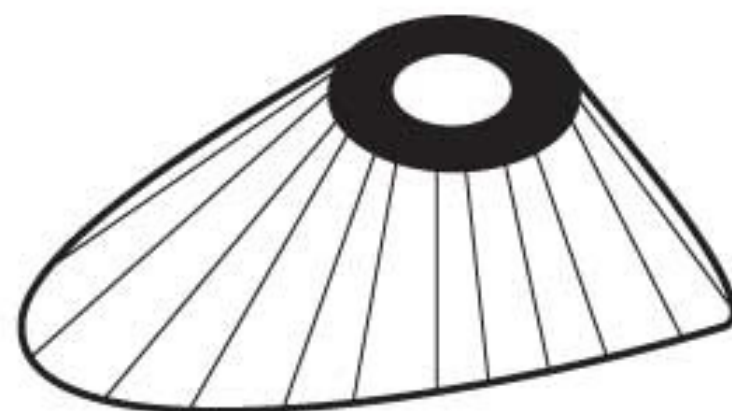




PLANTER



CHAIR



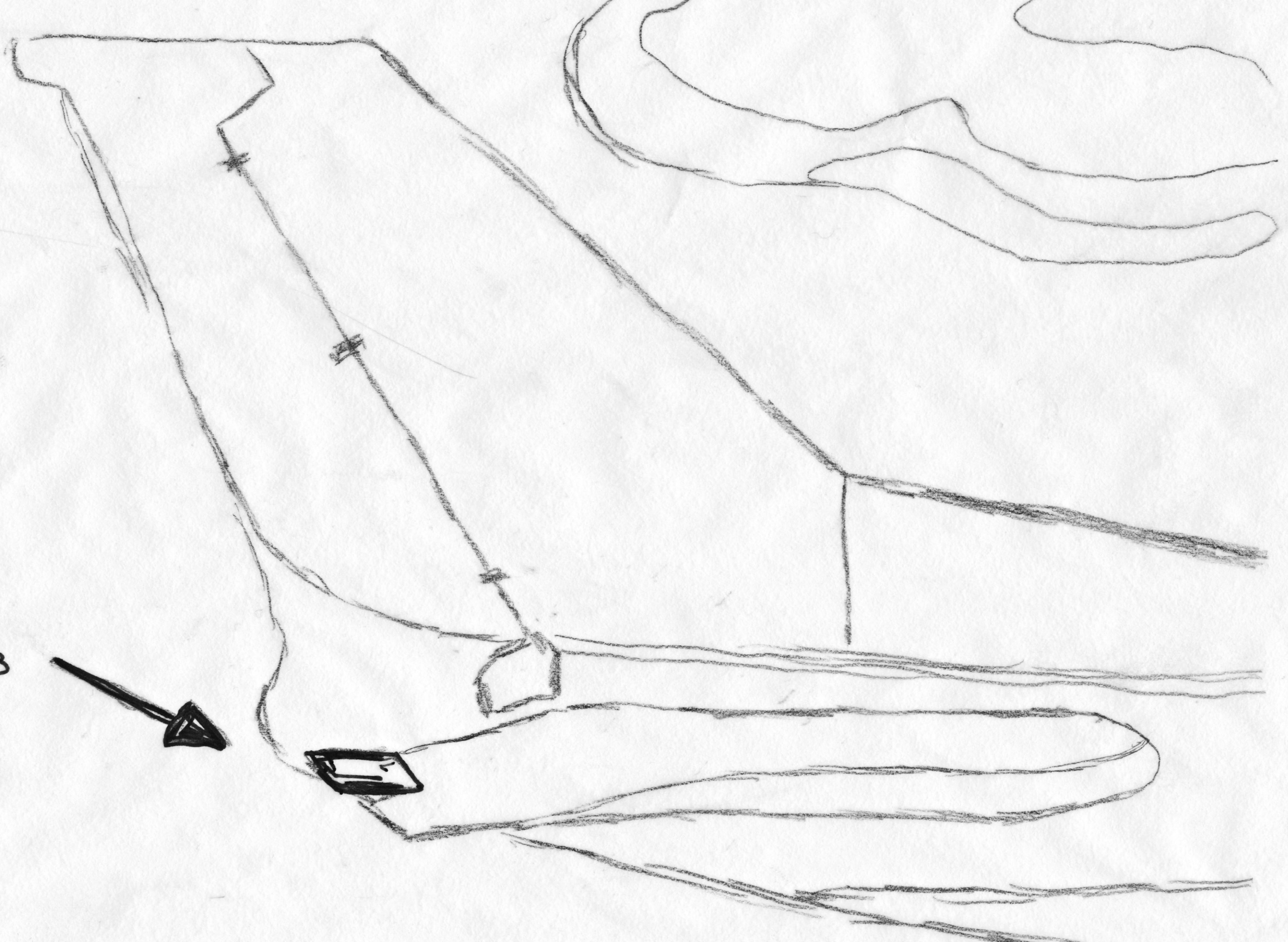
LIGHT REFLECTOR

COUNTER



COMING SOON - SCREEN





TRIM TAB



Lúcio Costa + Oscar Niemeyer
Brasília, Brazil

Creative Placemaking Plaza Program - New York City, US



Creative Placemaking

Parklet by Rebar - San Francisco, US





Brasilia

Lessons Learned:
Small changes = Big effects



Parklet



Plaza program NYC



Human Centered Design







THE PLANTER



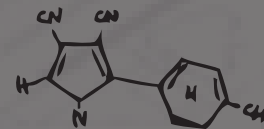
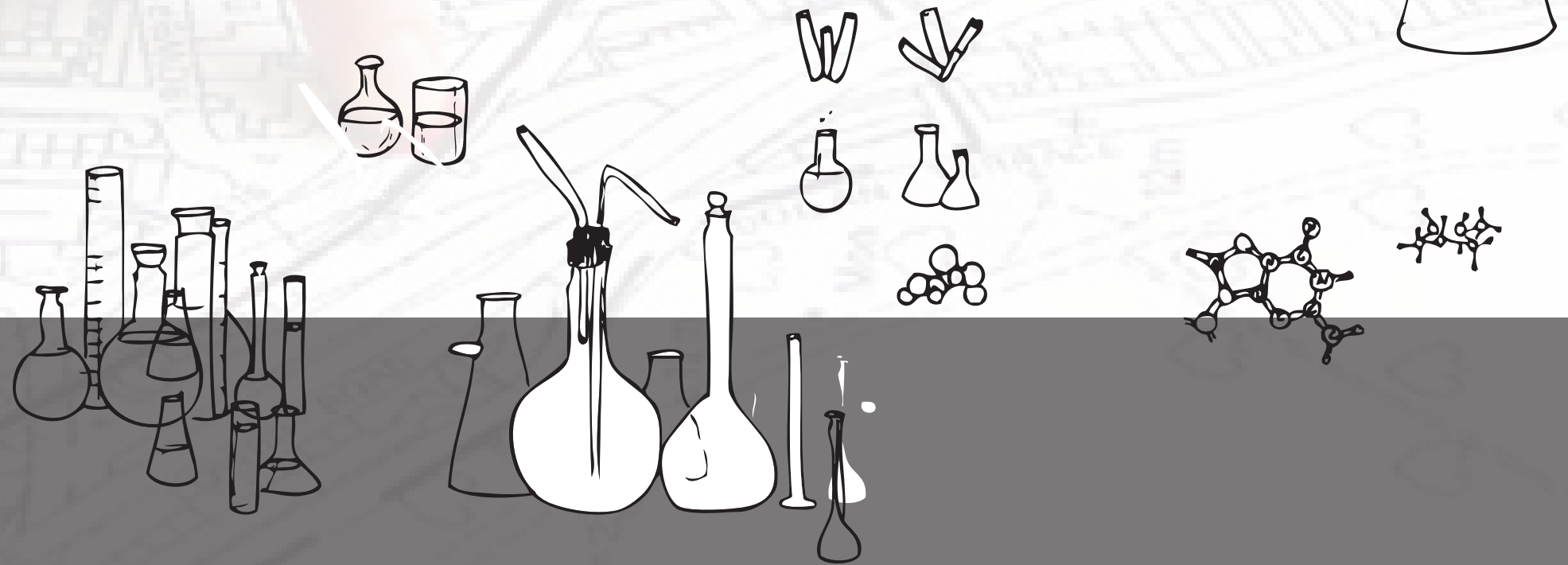








City as Lab Jane Jacobs





Cities for People

Jan Gehl





THANK YOU

Bland Hoke and Howard Chambers
Parsons the New School for Design, NYC

www.citysoftwalks.com

@softwalks