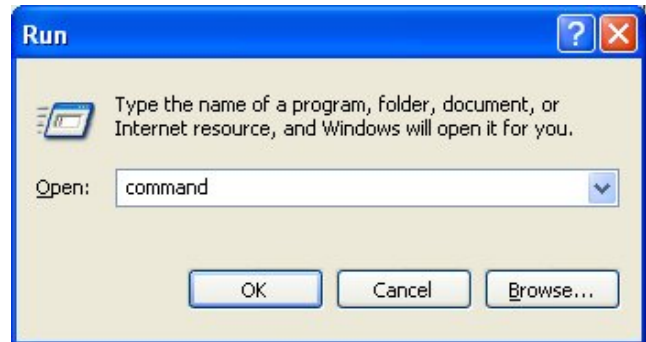


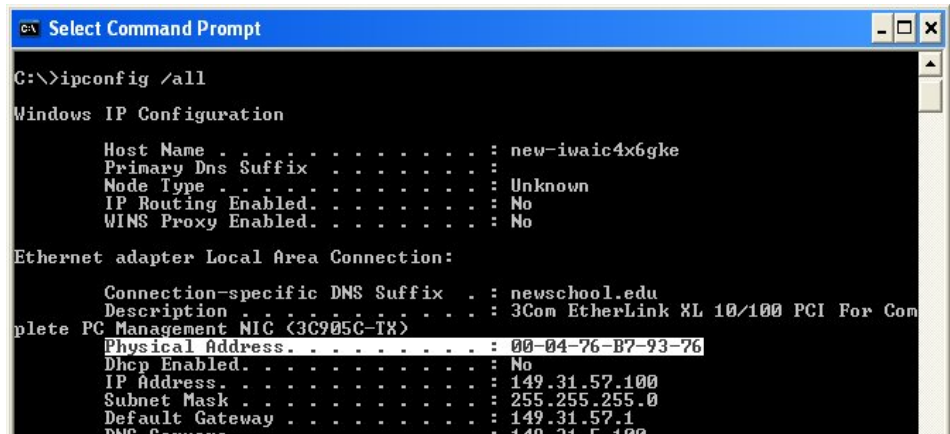
Obtaining your Network Card's MAC Address

Windows XP, Vista, Windows 7

1. On the Start Menu, click **Start**, followed by **Run**. When the **Run** window appears, type "command" followed by the Enter key to open a DOS window.



2. In the DOS window, type "ipconfig /all" followed by the Enter key. Your connection information will scroll up the screen.



Write down the 12 digit Physical Address listed beneath "Ethernet adapter Local Area Connection".

Apple Mac OS X

Open your **Hard Drive**. Open the **Applications** Folder. Open the **Utilities** Folder.

Click the **Network Utility** icon.

Select the **Info** tab.

In the **Drop Down Menu** select a network interface: ex. Ethernet Interface (en0)
Your Mac Address will be listed as your **Hardware Address**. Write down the 12 digit number.

