

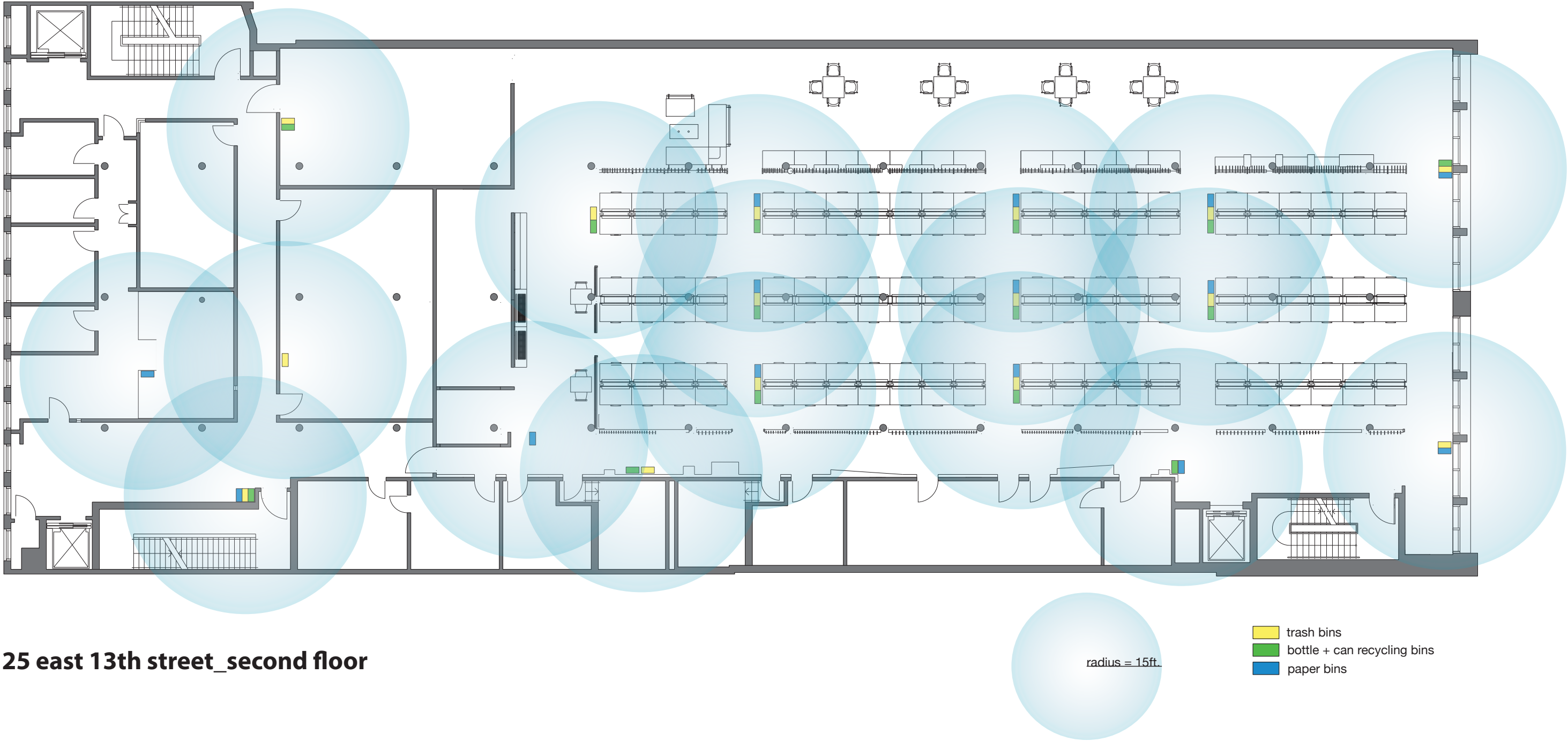


project description:

The New School's School of Constructed Environments has made it a goal this summer to re-evaluate and reconsider the current recycling system in our school. Thanks to The New School's Green Fund it has allocated funds to design and build a prototype on the 2nd and 3rd floor of 25 East 13th as well as the lower floor of 2 East 13th Street. Through research, interviews, and site analysis, our goal is to address recycling in a manner that considers a material's full potential. While recycling is imperative, education, the reuse of materials, and a heightened sense of responsibility will get us closer to a more sustainable lifestyle.

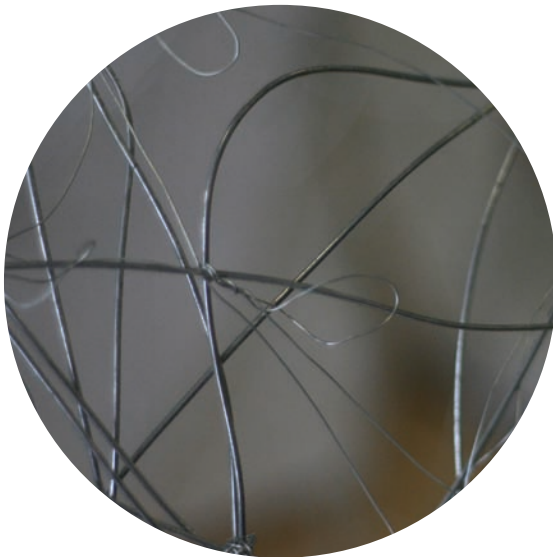
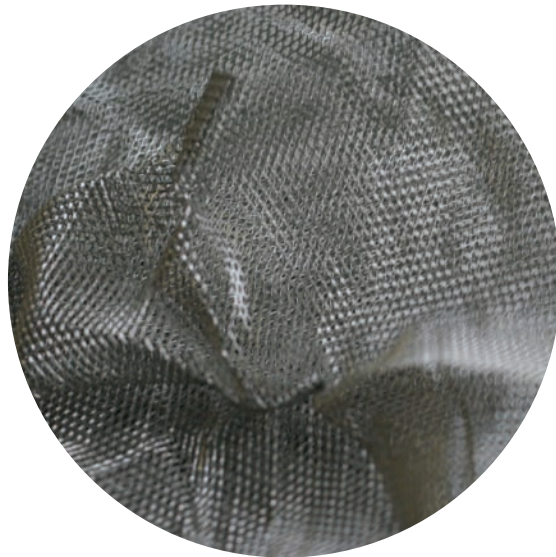
RESEARCH

diagram: minimum distance people are inclined to walk



25 east 13th street_second floor

materials currently being used at SCE:



materials categorization: currently being recycled at SCE

recyclable

plotter paper
plotter rolls
museum board
chipboard
dyed (construction) paper
Trace
paper bags
newspapers + magazines
light bulbs + CFLs
bottles (tops- only metal)
food scaps
coffee grinds/tea leaves
graphite shavings
electronics
printer cartridges/ink
plywood
balsa wood
bass wood
wood dowels
masonite
sawdust
wire/mesh
aluminum
hardware
mild steel
stainless steel
clay
wax
cement
textiles

reuseable

textiles
polycarbonate
MDF
plotter rolls
museum board
chipboard
dyed (construction) paper
Trace
paper bags
graphite shavings
plywood
balsa wood
bass wood
wood dowels
masonite
wire/mesh
aluminum
hardware
mild steel
stainless steel
clay
wax

non-recycable

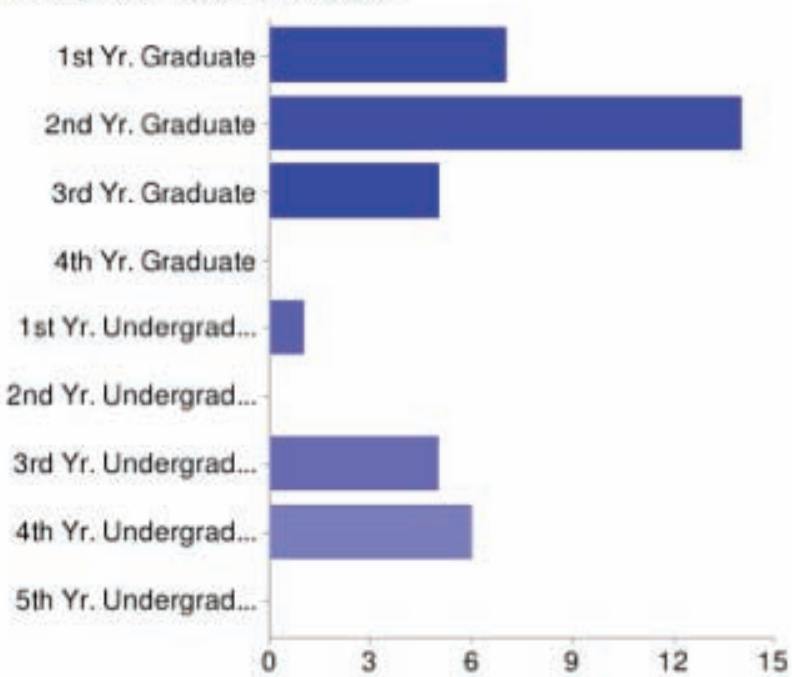
foam
styrofoam
foam core
flex-foam/spray foam
elmers/sobo
paper cement
plastic packaging
tissues, napkins +
paper towels
acetate

toxic/hazardous

zap-a-gap
accelerators
spray adhesives
spray paint
WD40
resins
color gels
plaster
razor blades
paint
polyurethane
batteries

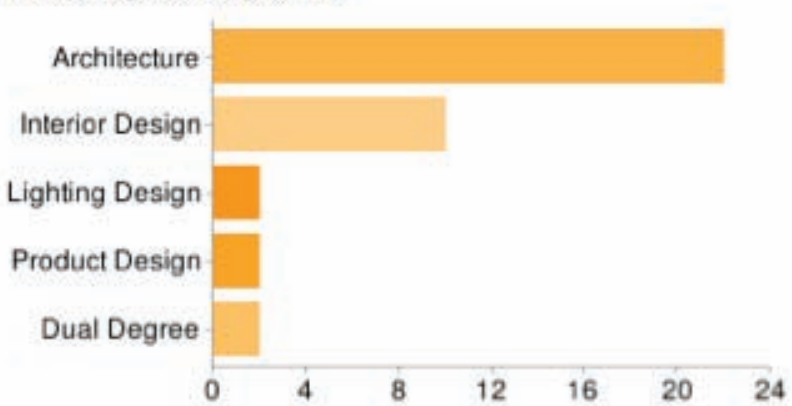
student survey results:

What year are you currently in?



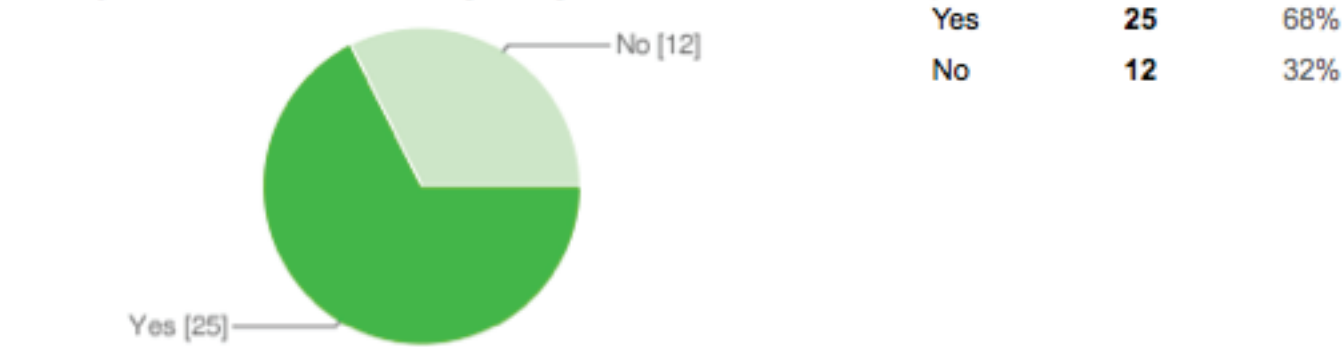
1st Yr. Graduate	7	18%
2nd Yr. Graduate	14	37%
3rd Yr. Graduate	5	13%
4th Yr. Graduate	0	0%
1st Yr. Undergraduate	1	3%
2nd Yr. Undergraduate	0	0%
3rd Yr. Undergraduate	5	13%
4th Yr. Undergraduate	6	16%
5th Yr. Undergraduate	0	0%

What program are you in?

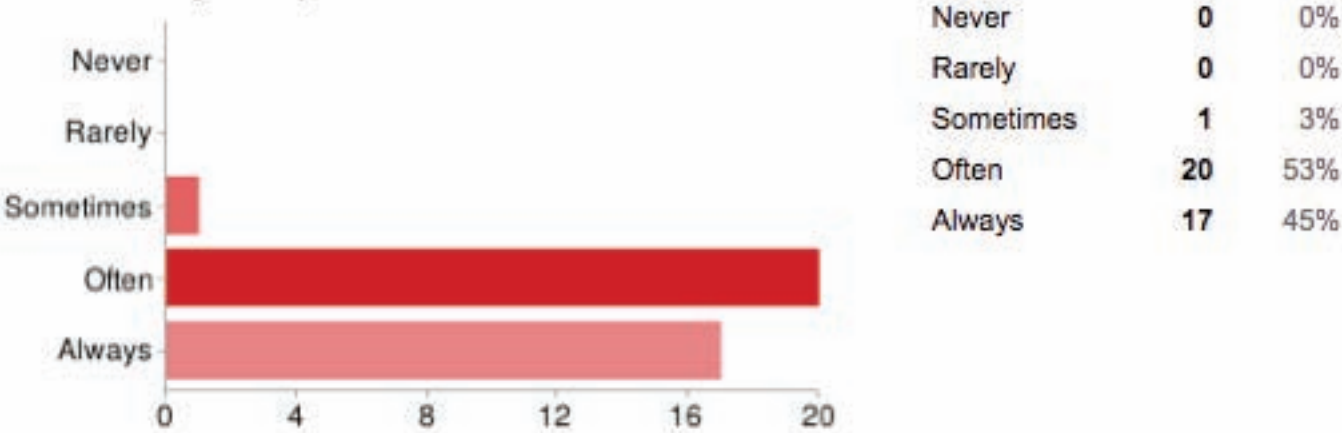


Architecture	22	58%
Interior Design	10	26%
Lighting Design	2	5%
Product Design	2	5%
Dual Degree	2	5%

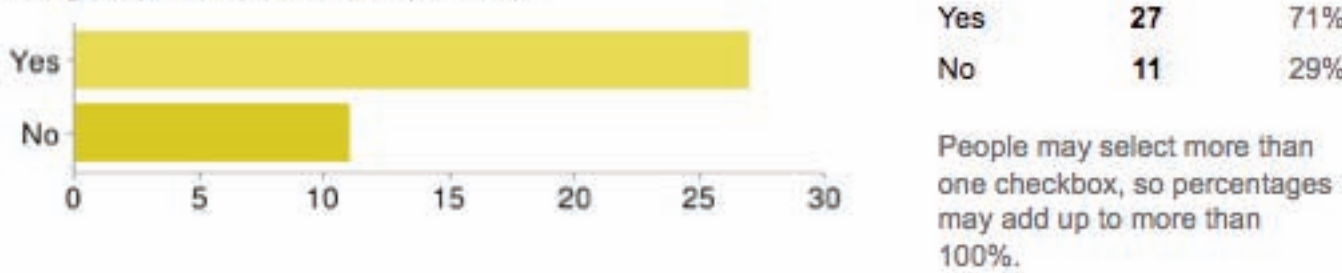
Would you volunteer to walk a bag of organic waste to the Union Square market?



How often do you recycle?



Would you be willing to sacrifice workspace in order to facilitate an area that is specifically designated for the reuse of materials?



do you feel recycling is important? why or why not?

Absolutely. It is so easy and saves so much in terms of energy/resource footprint and landfill space.

YES!

We must find a way for a **social change** more so than the bins themselves...with the change of attitude and awareness of recycling people will start caring more and realizing the importance of our future resources...it is my belief that the capacity to hold the goods will follow.

how far would you walk to recycle something?

A city block.

Miles!!!

Within the building

I prefer to walk to the **end of the row**, but farther if need be.

what do you think of the existing recycling system at Parsons/The New School? how can it be improved?

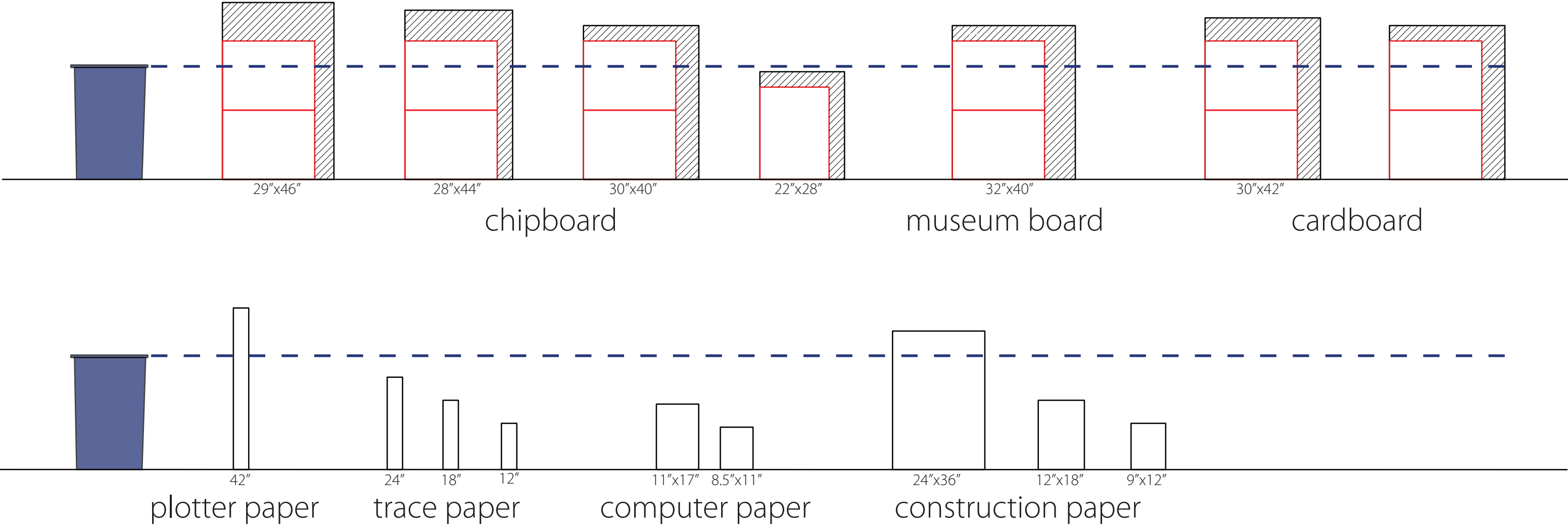
Bins are small and not efficient.

"The recycling system at the end of the year needs some work. We ARE FORCED to throw out so much useful (and expensive) material precisely at the time where there is a sudden abundance of space to put shit.

The recycling receptacles are not of adequate size and are often overflowing into work spaces

It could be improved greatly if we had a way to utilize our scraps.

frequently used paper and subsequent cutoffs:



main concerns with existing recycling bin system:



interchangeable/removable lids



insufficient openings



lack of signage and education



poor signage



bins used as storage



dis-jointed disposal sytems



trash can with no lid

scrap-pile
materials pick-up + drop off

twitter



virtual scrapyard

craigslist

facebook

organic waste collection



visible reminders
facts+ figures



promote less waste



modular/flexible system

educate
students, faculty + facilities staff



our philosophy:

We feel that our design should address the goal of creating **less waste** through **re-use**. The existing bins although small are abundant and materials that do not fit in the containers should be re-used, not thrown away or placed in a recycling bin. Through better education, signage and storage space we believe that we can greatly reduce the amount of material that ends up in landfills and recycling bins.

design goals:

- education through graphic design/signage/display
- scrap-pile/re-use station
- movable cart that picks up materials on a weekly basis
- create less waste with waste reduction incentives- ban water bottles
- pilot composting project
- toxic/hazardous waste collection
- adaptation of existing bins for better signage

DESIGN PHASE

design goals: educate and improve existing issues

cardboard pizza boxes are recycable with mixed paper!



newspaper + recyclable plastic bottle in trash!



soiled paper cup in glass, plastic and metal recyclables bin!



plastic containers + caps are not recyclable



used as material storage space



mixed paper slot not big enough for pizza boxes

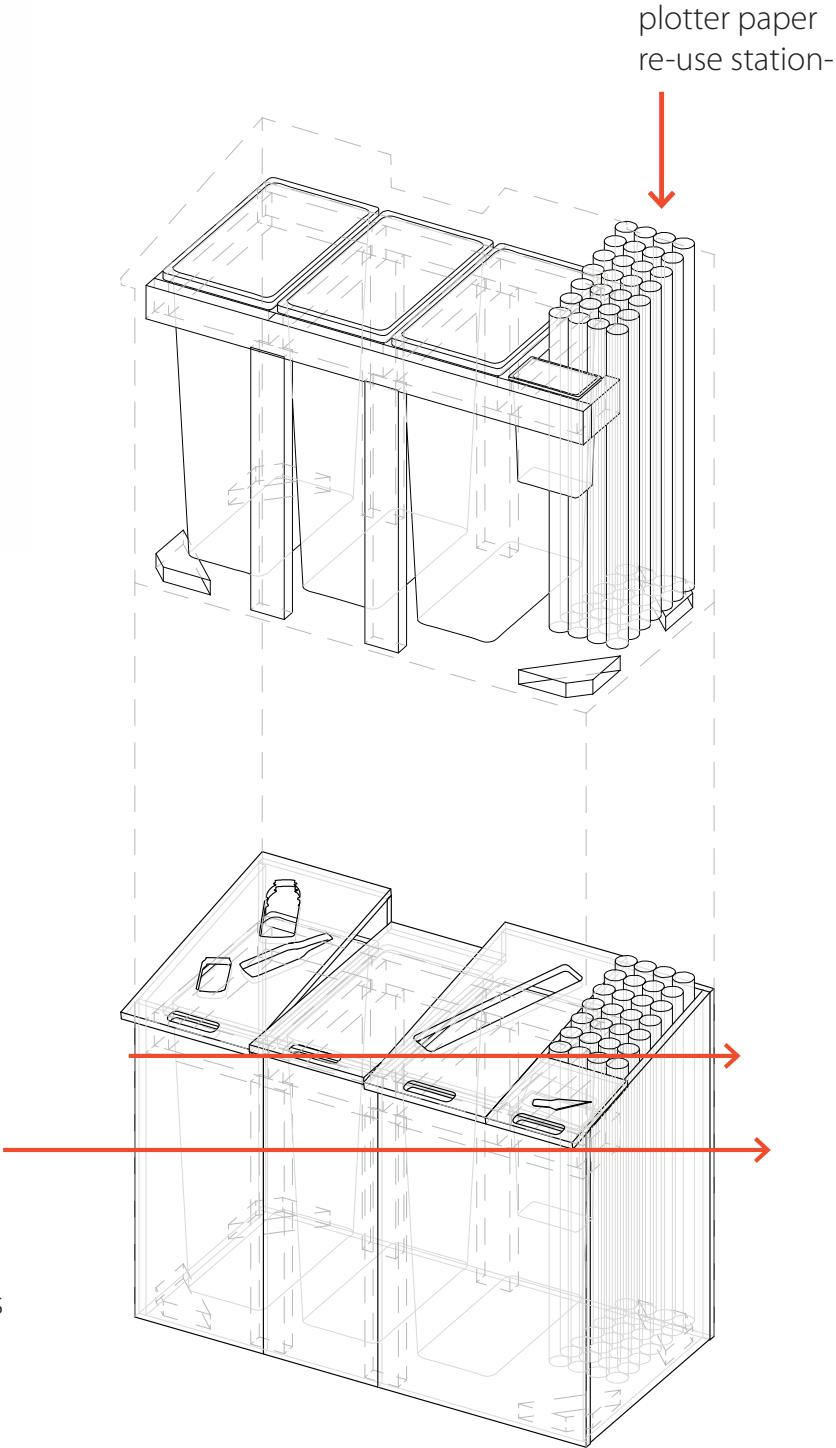


design phase_
design goals

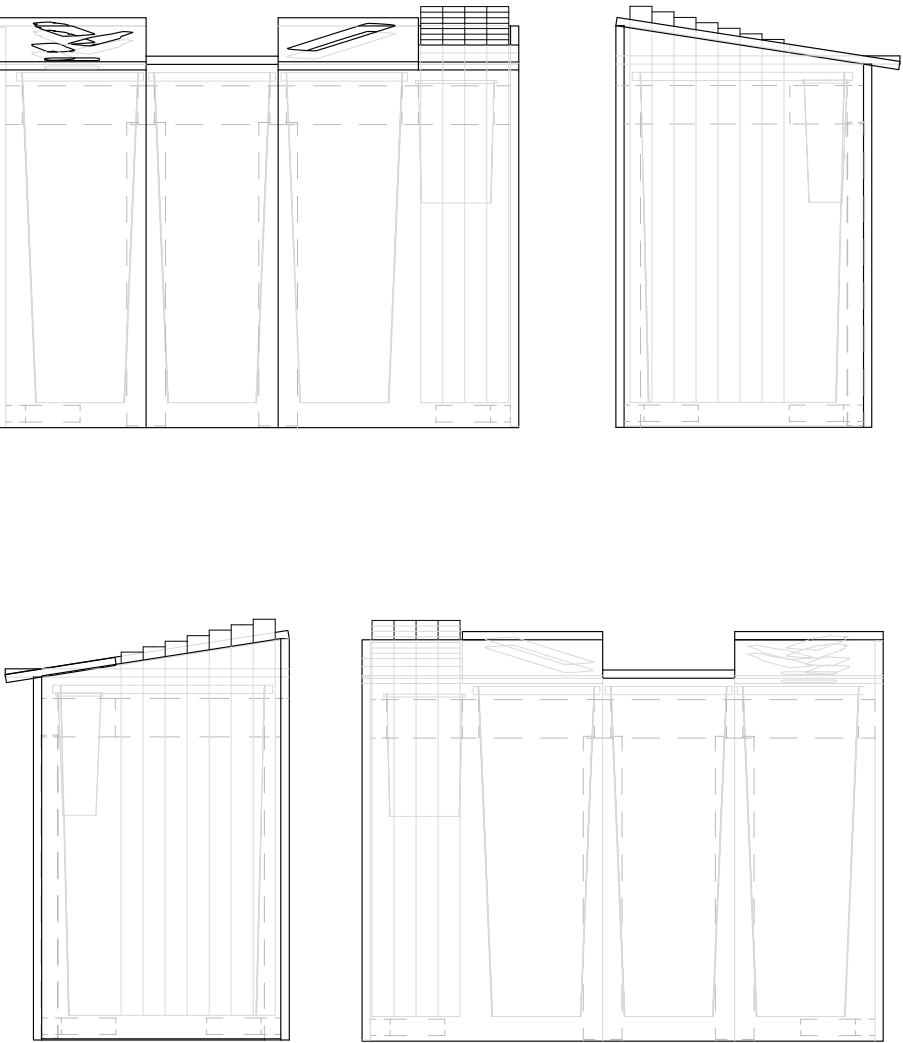
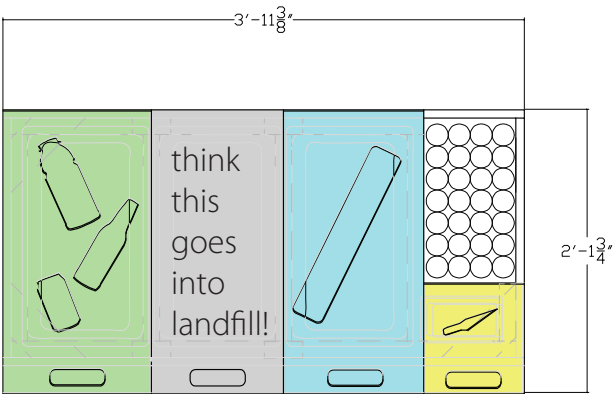
design goals: fixed lids (not interchangeable)



bin redesign: option a- vertical system

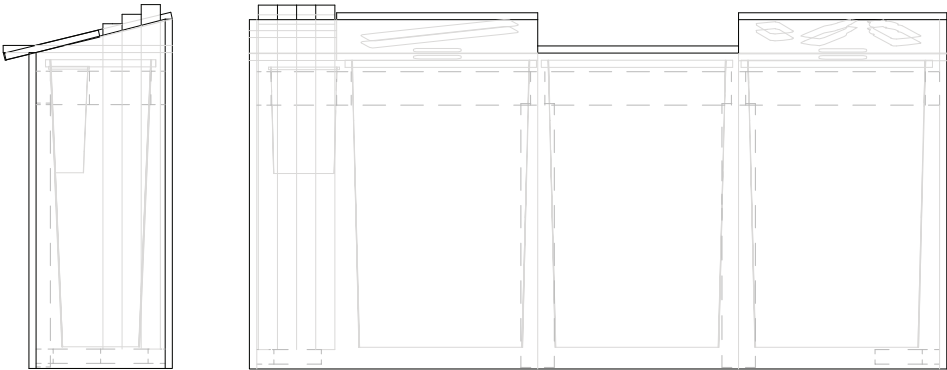
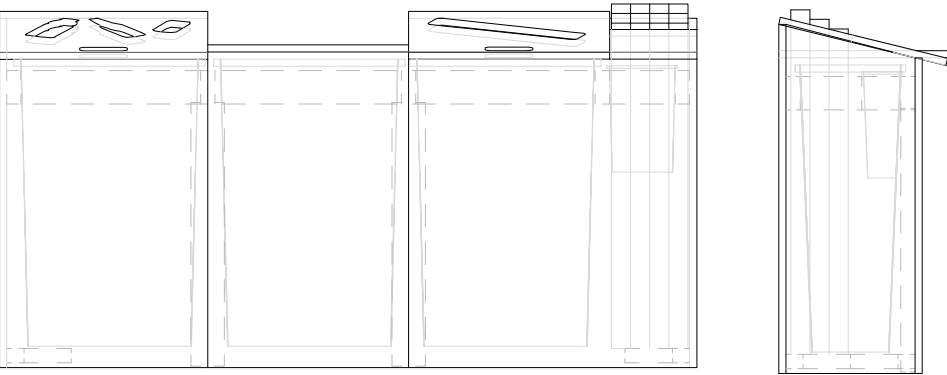
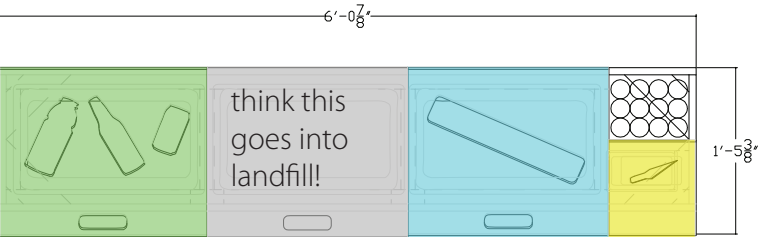
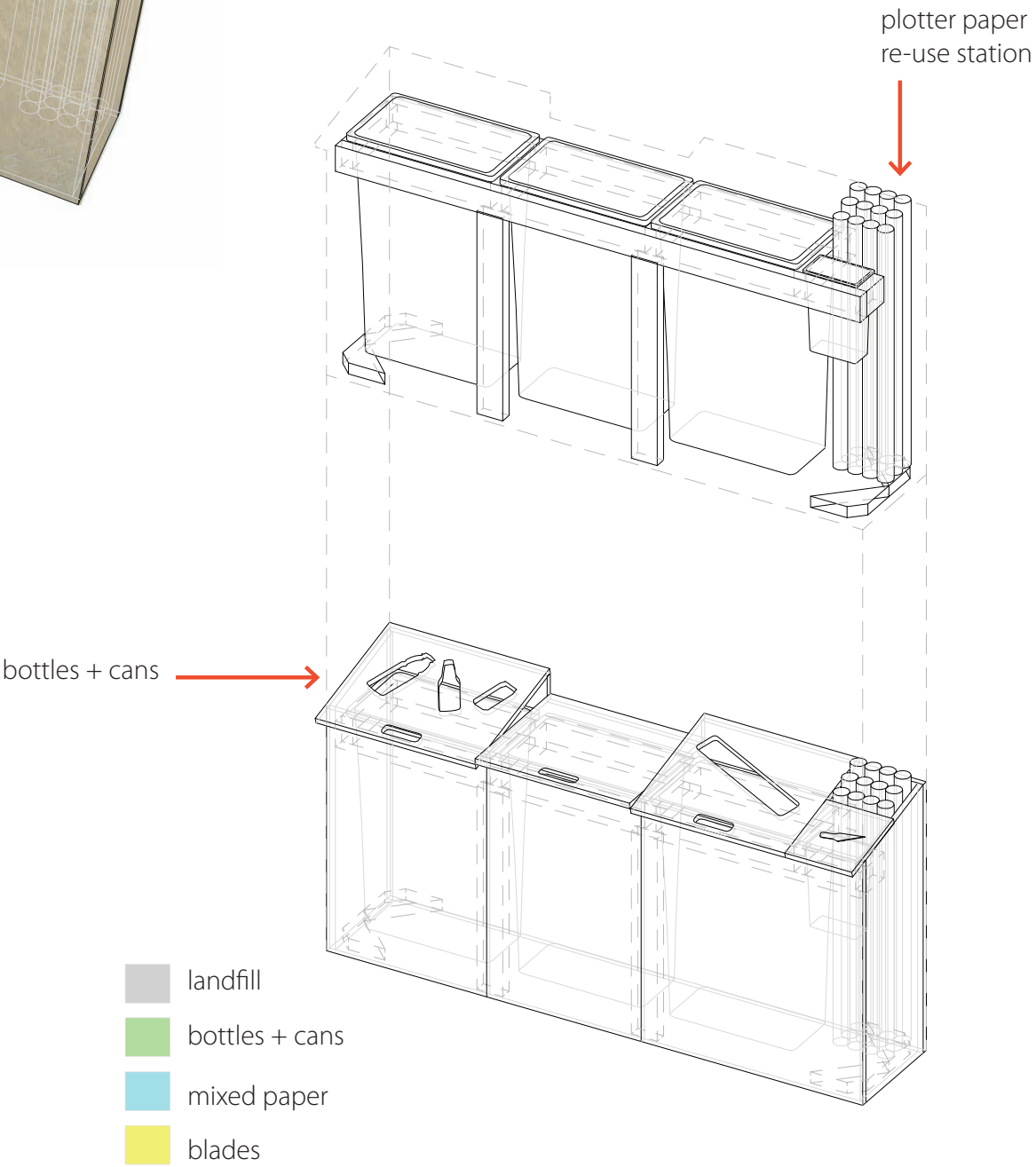
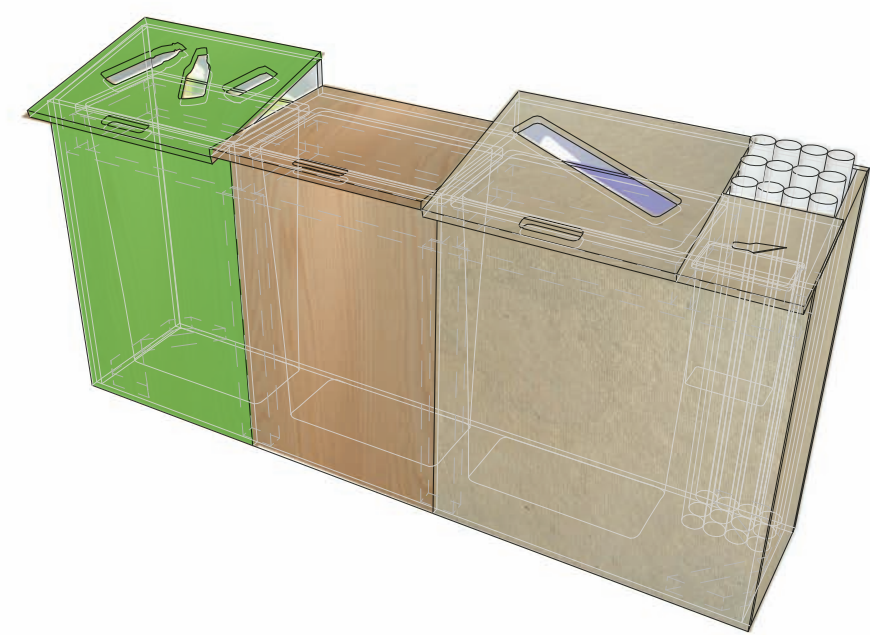


- landfill
- bottles + cans
- mixed paper
- blades



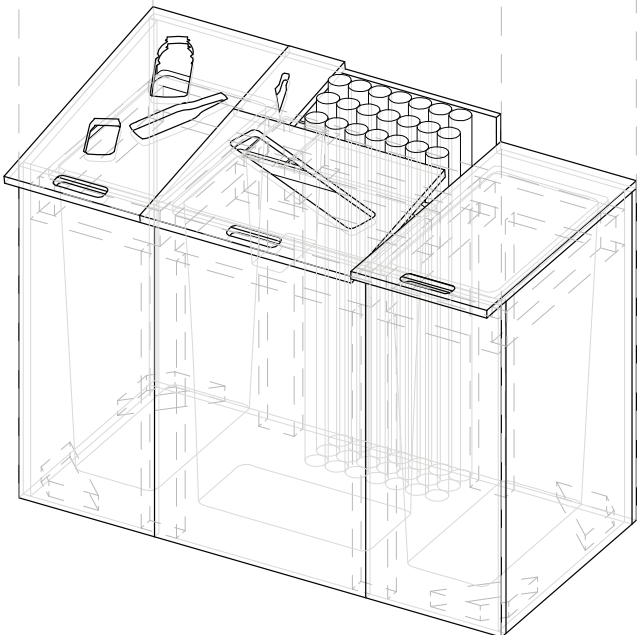
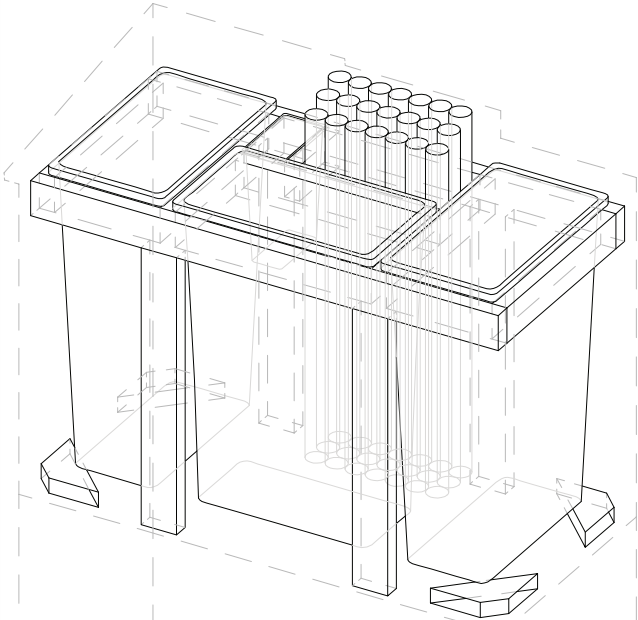
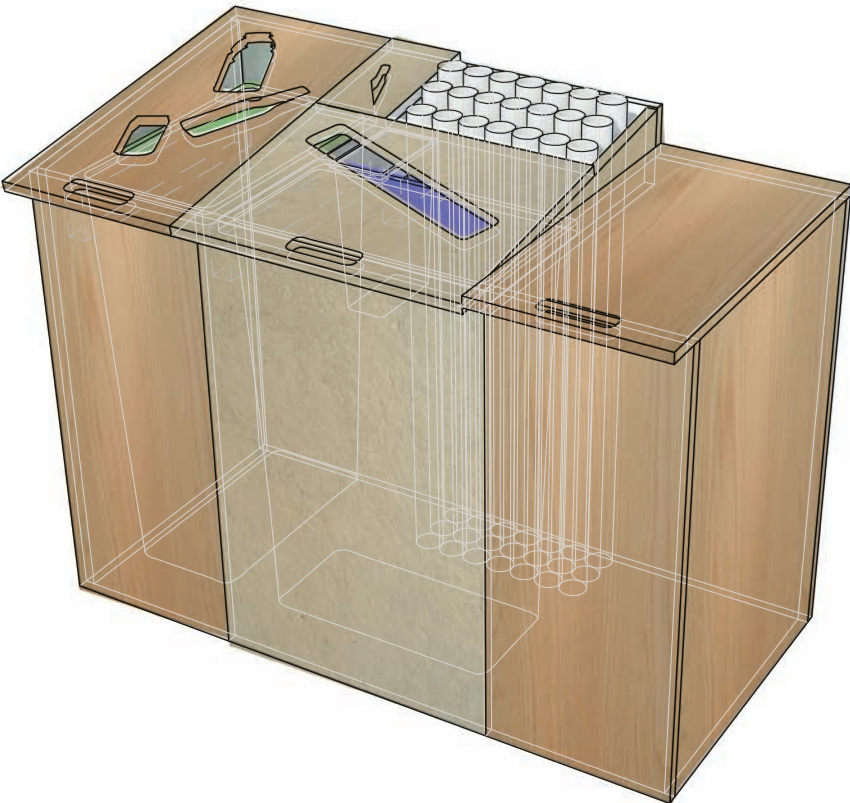
design phase_
Option a

bin redesign: option b- horizontal slim system

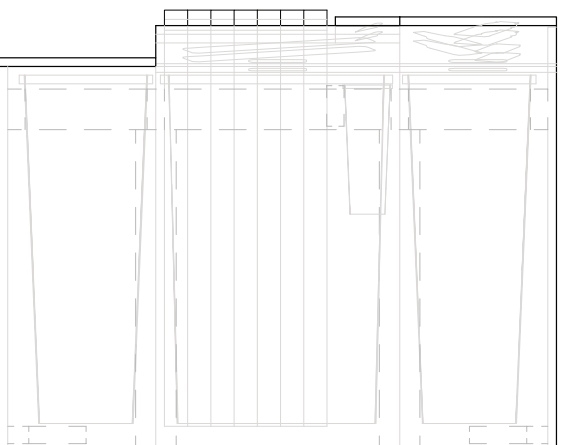
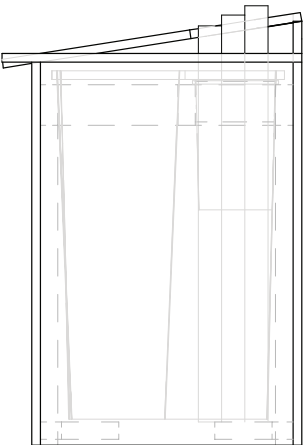
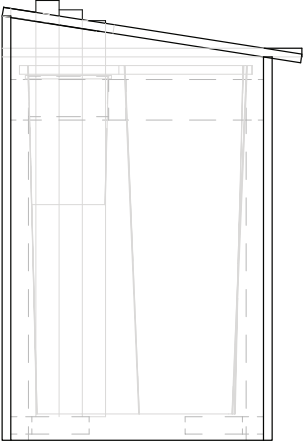
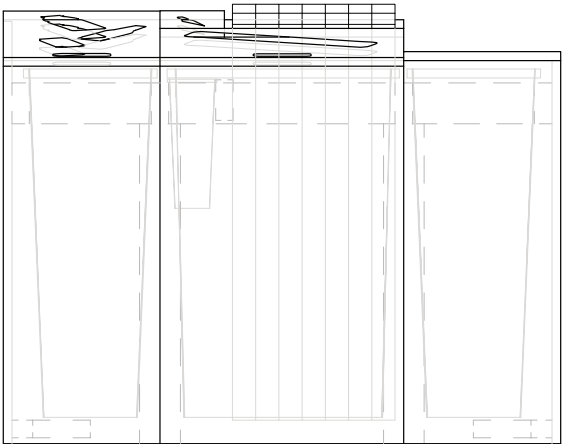
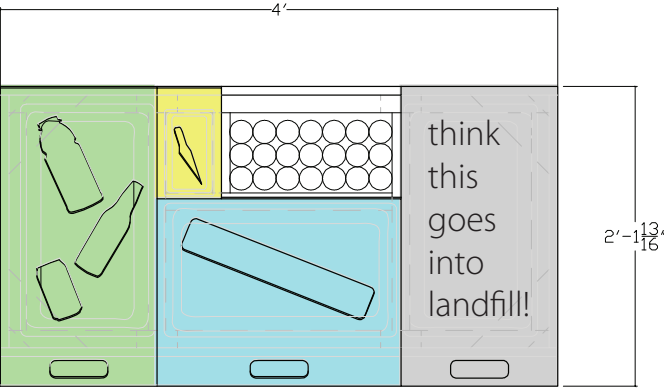


design phase_
Option b

bin redesign: option c- combined system



- landfill
- bottles + cans
- mixed paper
- blades

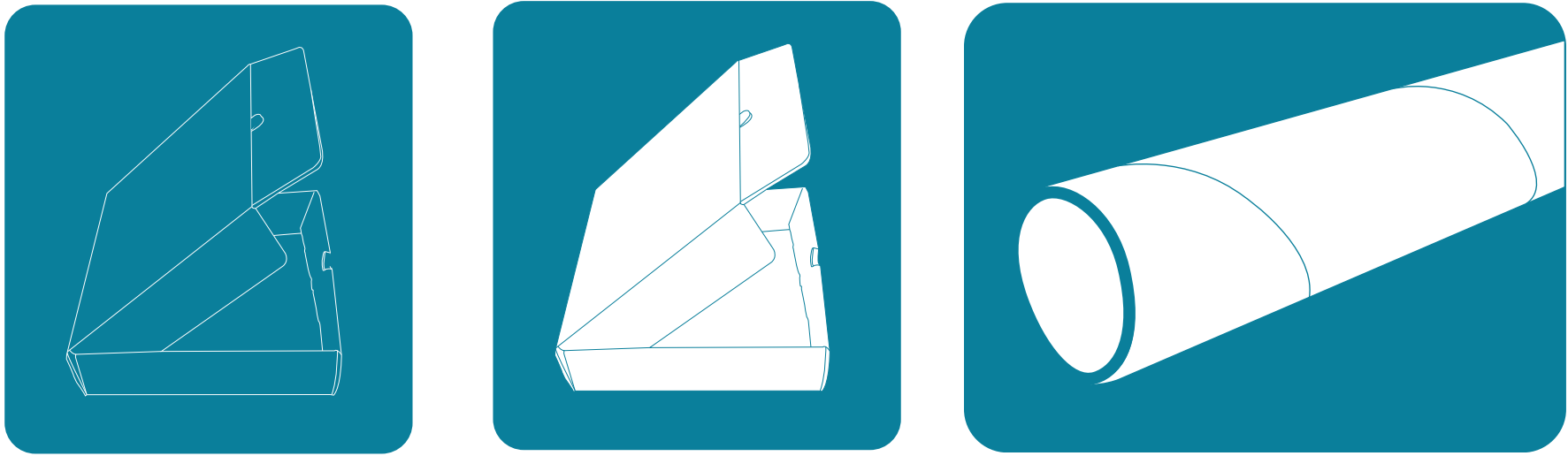


design phase_
Option c

metals, plastics, and cartons



unsoiled paper and cardboard(products)



sharps

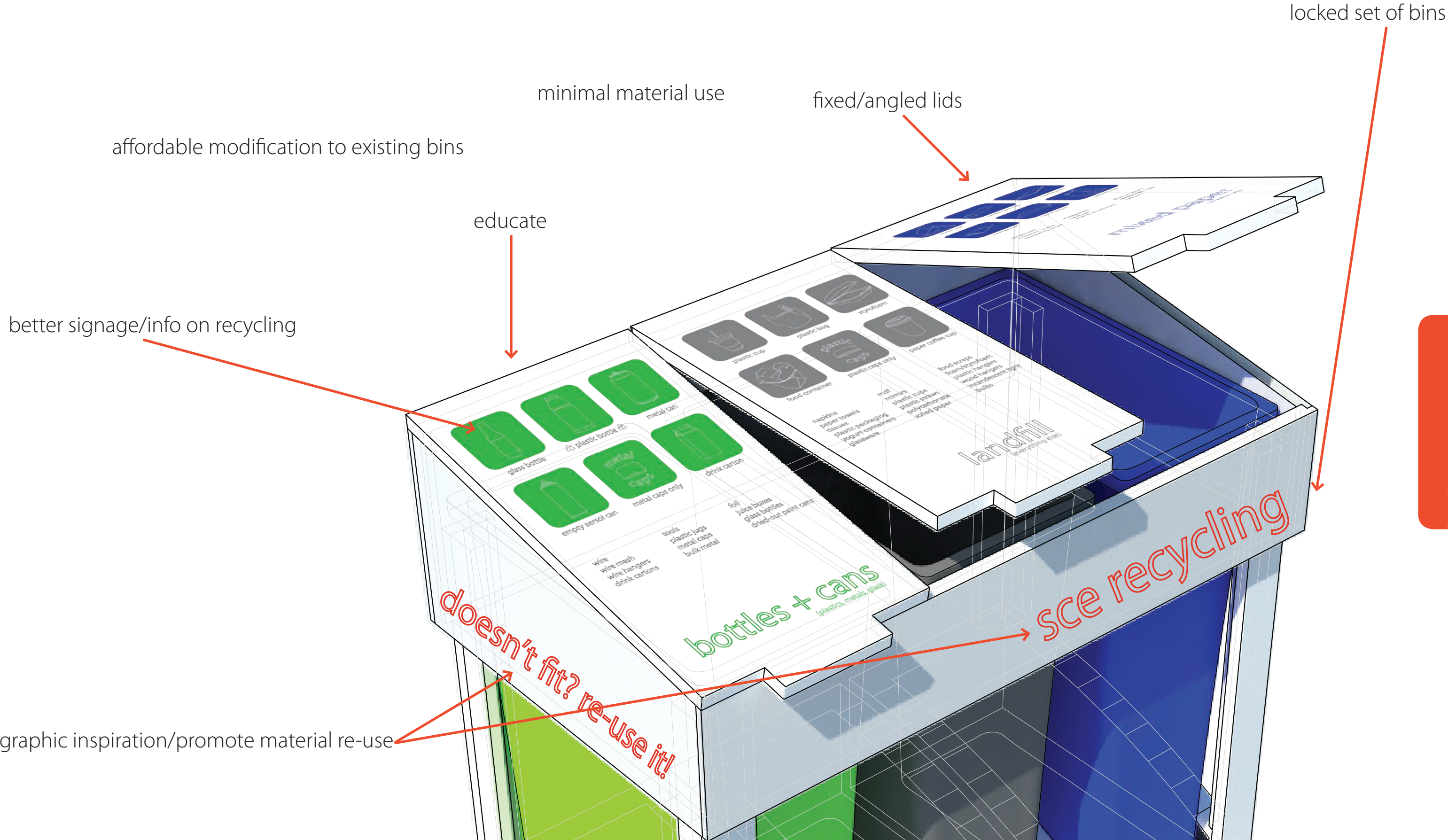


landfill

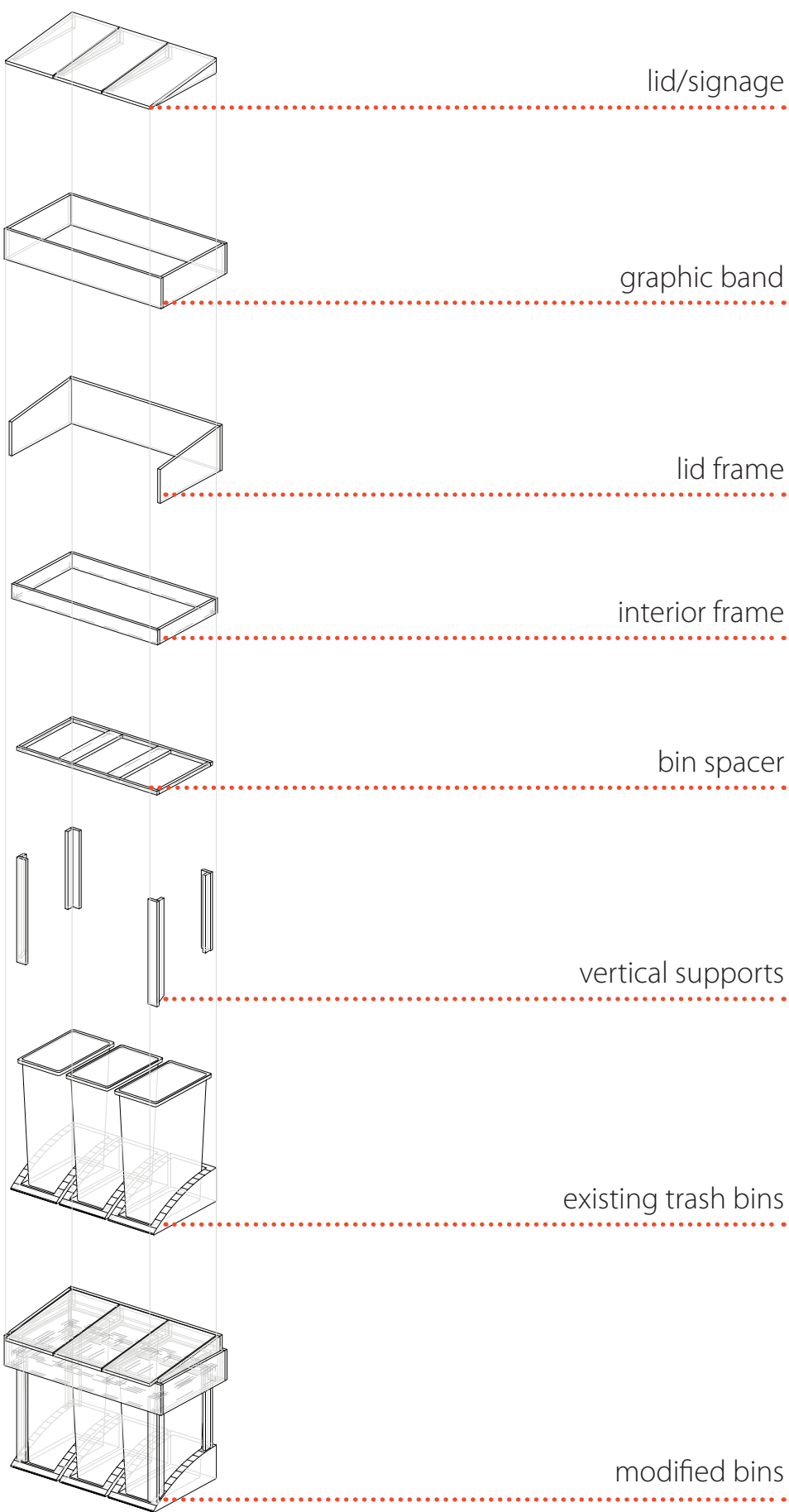
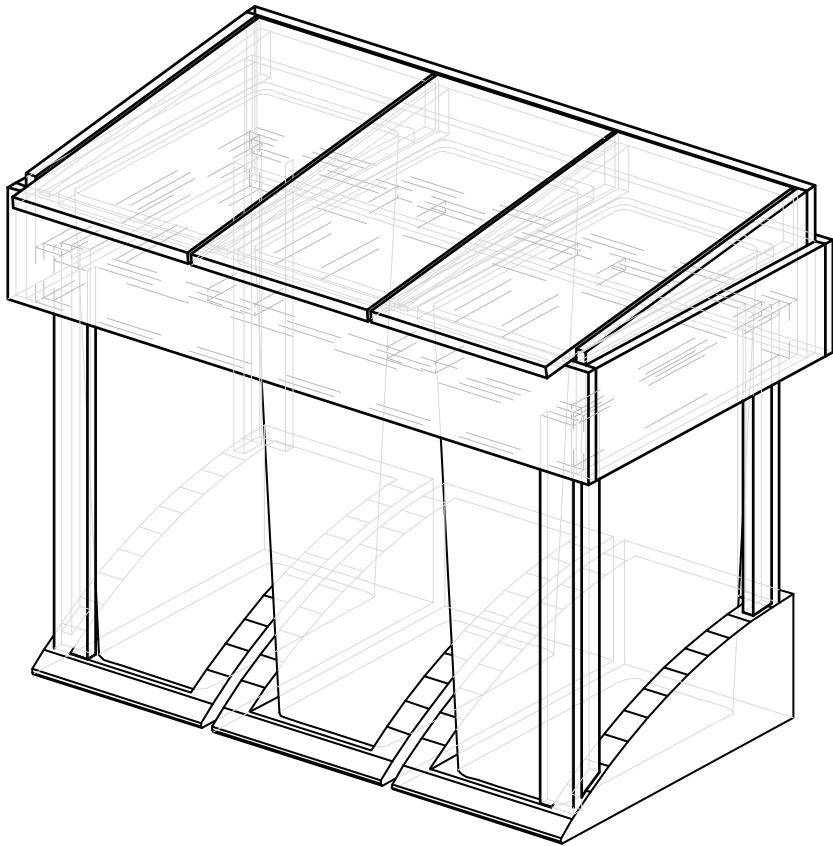


FINAL DESIGN+BUILD

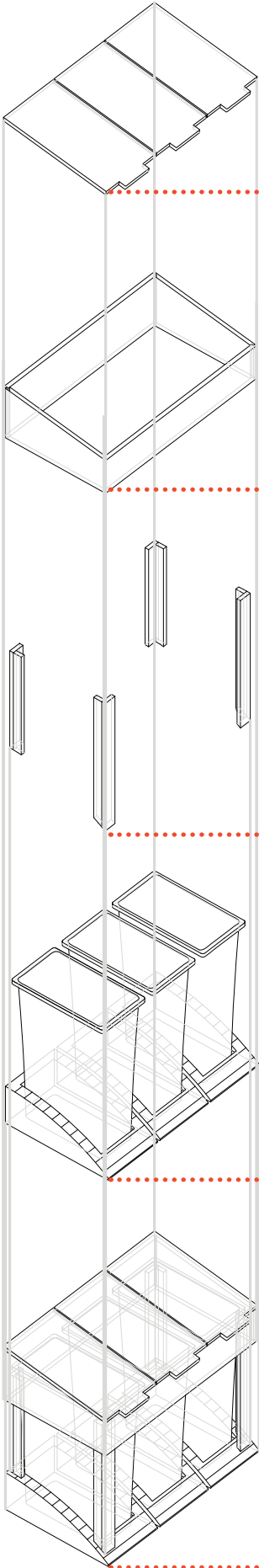
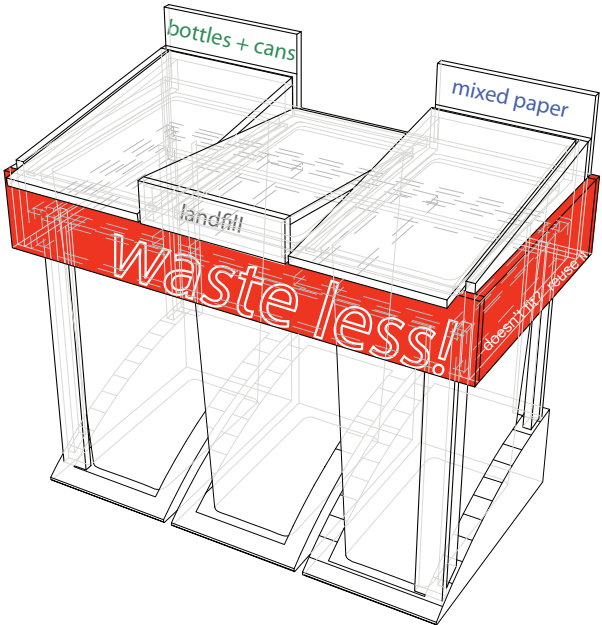
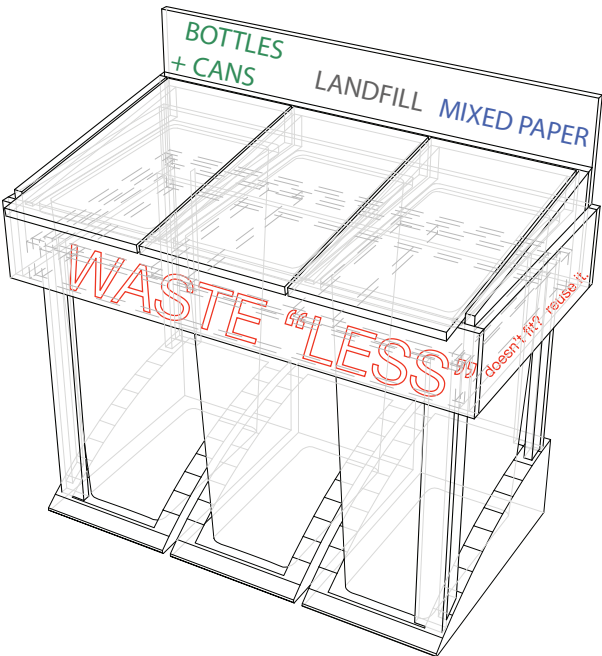
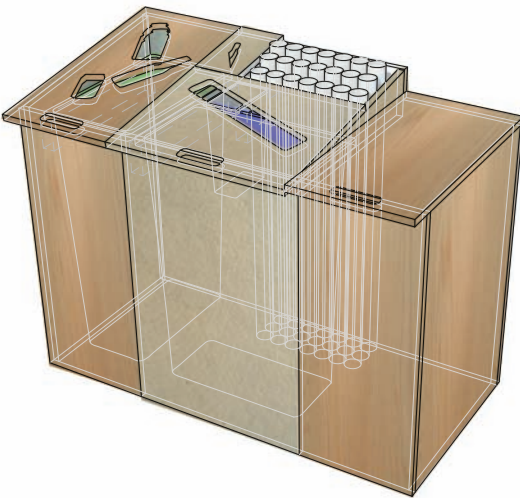
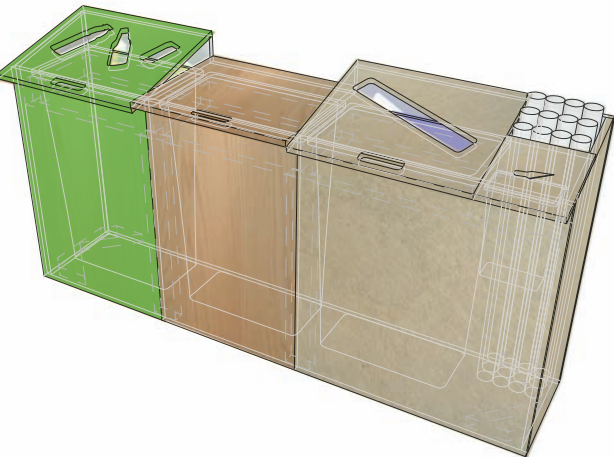
design goals:



initial prototype:



simplified final design:



lid/signage

graphic band

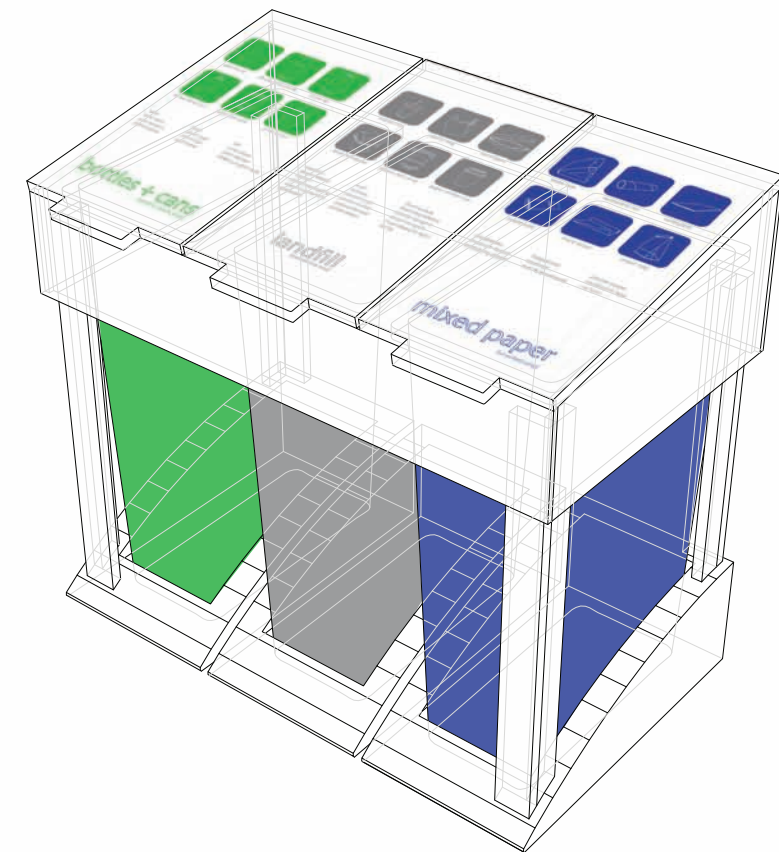
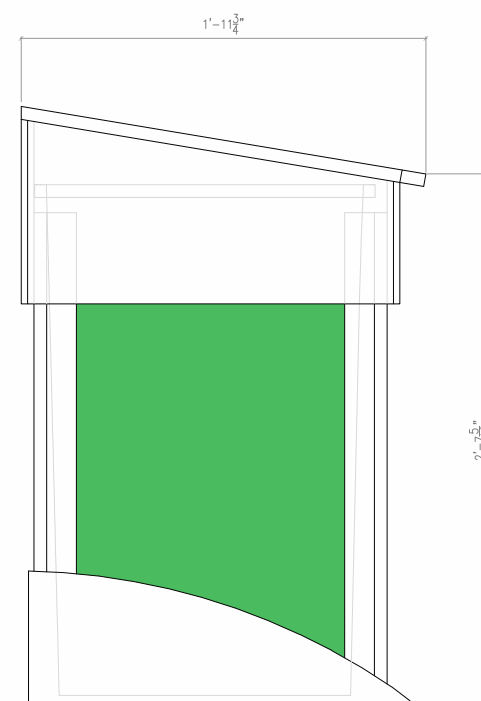
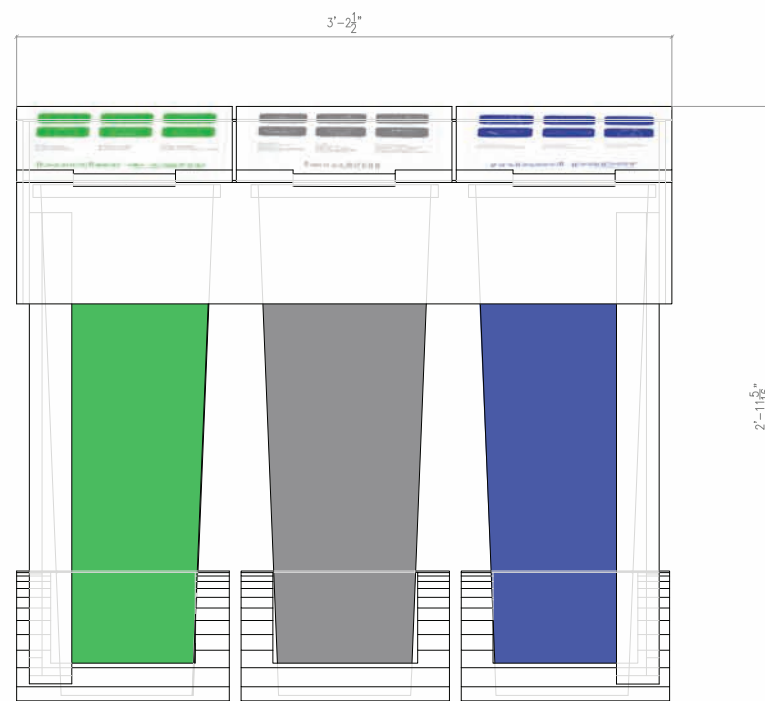
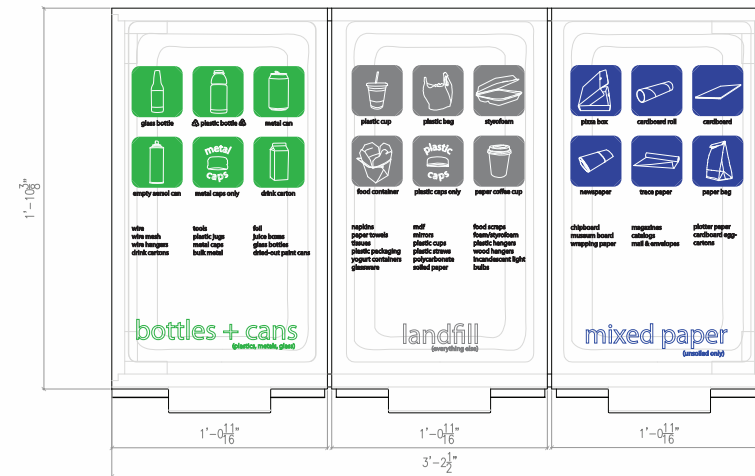
vertical supports

existing trash bins

modified bins

build phase_
final design

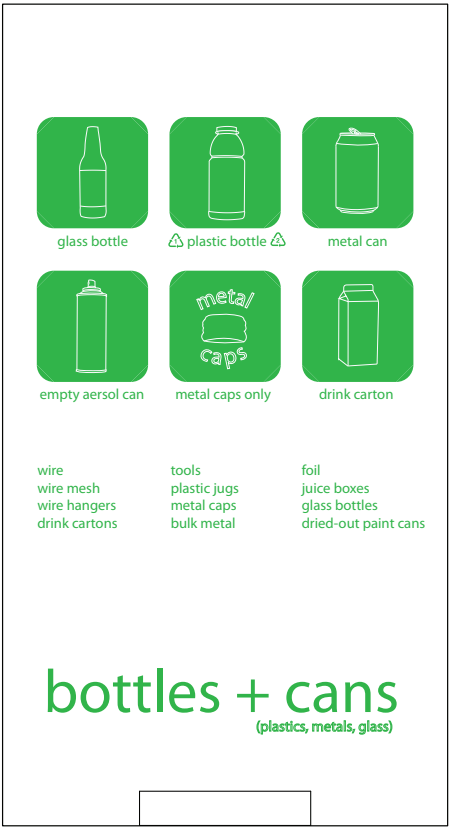
final design:



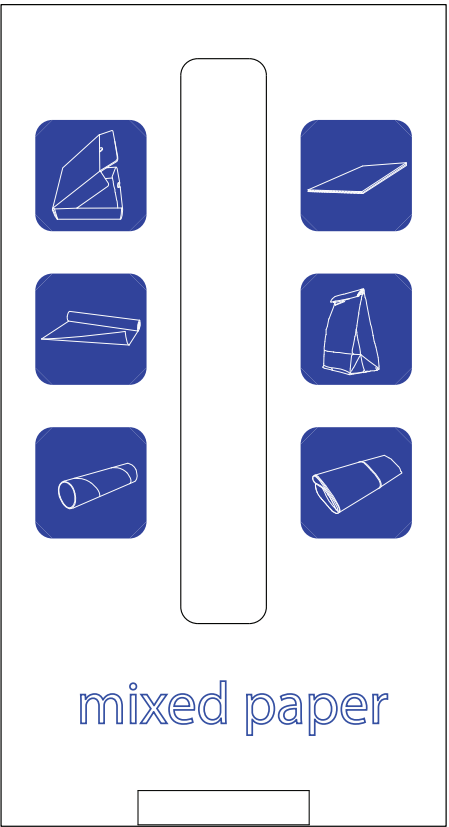
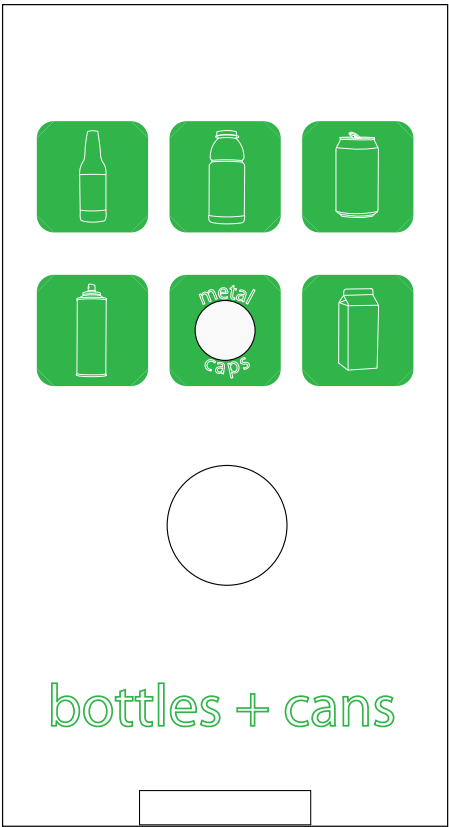
build phase_
final design

final lid designs:

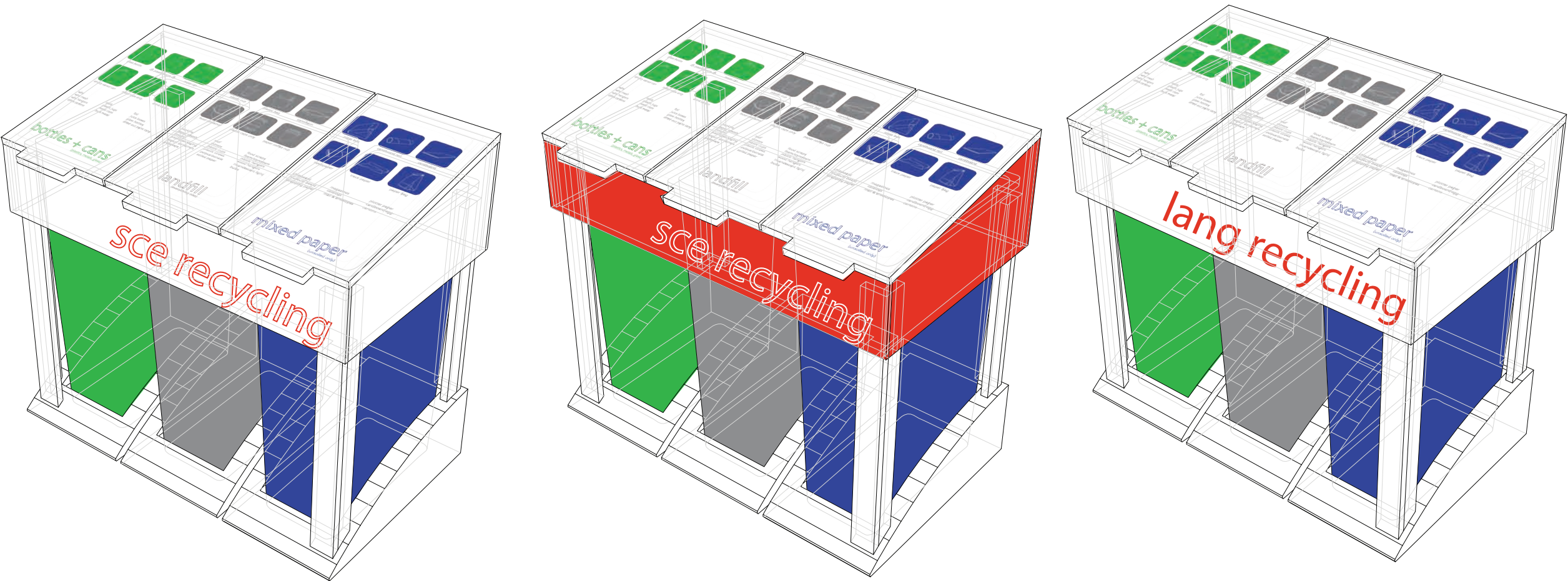
option 1: graphics + text



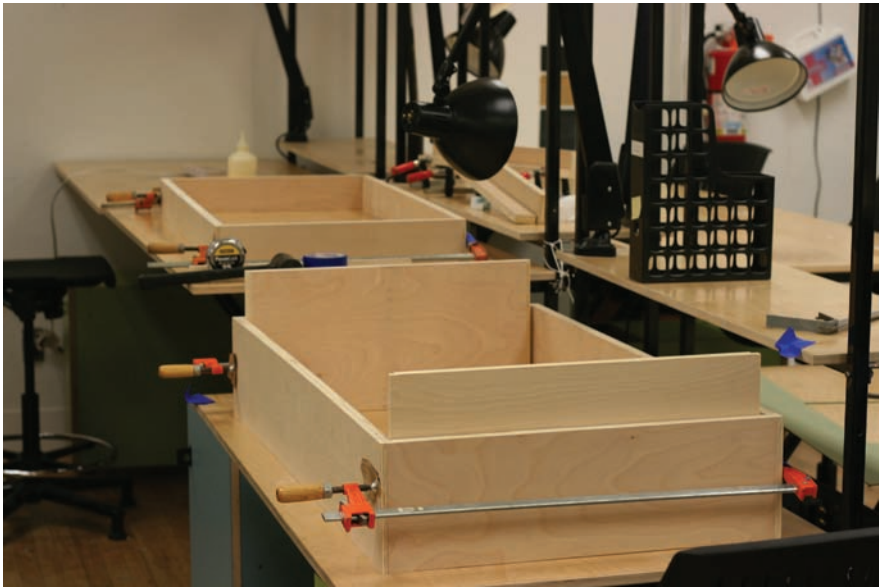
option 2: graphic icons + holes



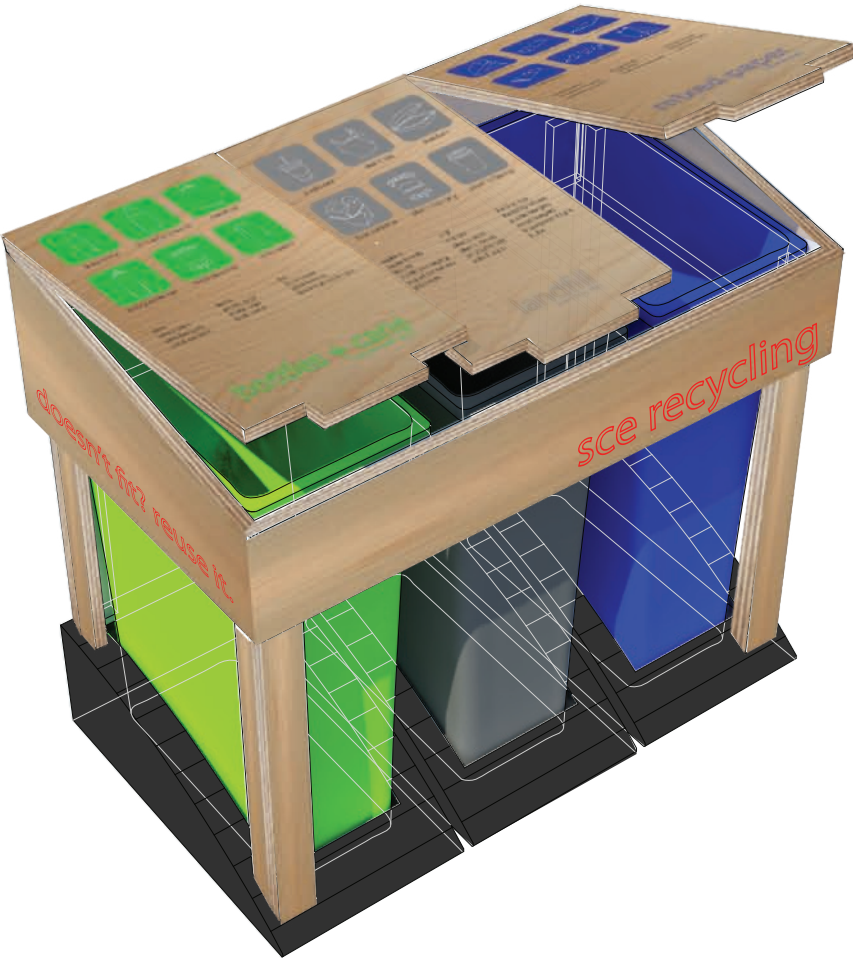
graphic band ideas:



process photos:



final design:



final design images:



build phase_
final design





build phase_
final design

future goals:

Going forward these are the goals we see for making recycling at SCE more successful.

goals:

- SCE recycling guidebook (online)
- scrap-pile/re-use station using design workshop scrap
- movable cart that picks up reusable materials on a weekly basis
- create less waste with waste reduction incentives (SCE reusable water bottles)
- pilot organic waste collection with additional pick-up at 25 East 13th Street
- toxic/hazardous waste collection at reuse stations (batteries, bulbs + blades)
- presentation to incoming students at orientation
- analysis of success/failures of bin redesign