

# **THE NEW SCHOOL**

Community Meeting  
October 19, 2009



**65 Fifth Avenue**  
*Looking South*

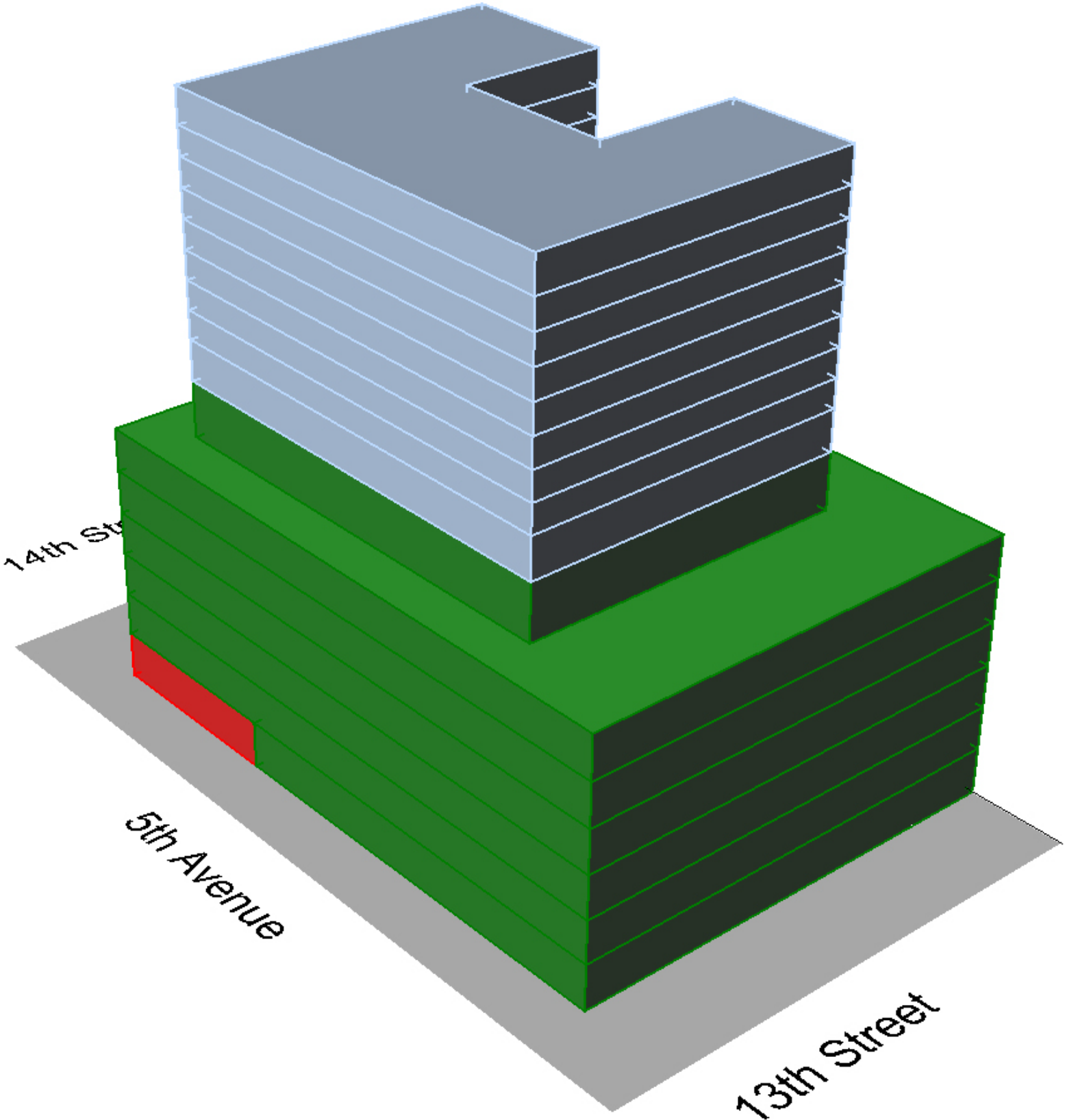
**THE NEW SCHOOL**



**65 Fifth Avenue**  
*Looking South*

**THE NEW SCHOOL**

- Retail
- Academic
- Dormitory







Aerial View of Site Surrounding 65 Fifth Avenue



# The New School

65 Fifth Avenue

## **Demolition and Abatement Phasing Schedule and Site Logistics Plan**

October 16, 2009







# Phasing Schedule

- **Soft demolition and asbestos abatement**
  - **October 1, 2009 through December 31, 2009**
- **Apply for and obtain full demolition permits**
  - **January 4, 2010 through February 5, 2010**
- **Full demolition commencement**
  - **February 2010 through July 2010**
- **Excavation and foundation starts**
  - **August 2010**



# Demolition and Abatement Approach

- **There will be 24/ 7 security onsite, two (2) guards during working hours.**
- **An independent full time New York City Site Safety Project Coordinator will be assigned to the project.**
- **GCI (a third party) will be responsible for monitoring all abatement activities and air monitoring.**
- **PAR Environmental will remove ACM (asbestos containing materials) in strict accordance with all New York City, New York State and Federal regulations under GCI's direct supervision.**
- **Two (2) Flag person will be provided while crossing sidewalk during operations for pedestrians safety.**

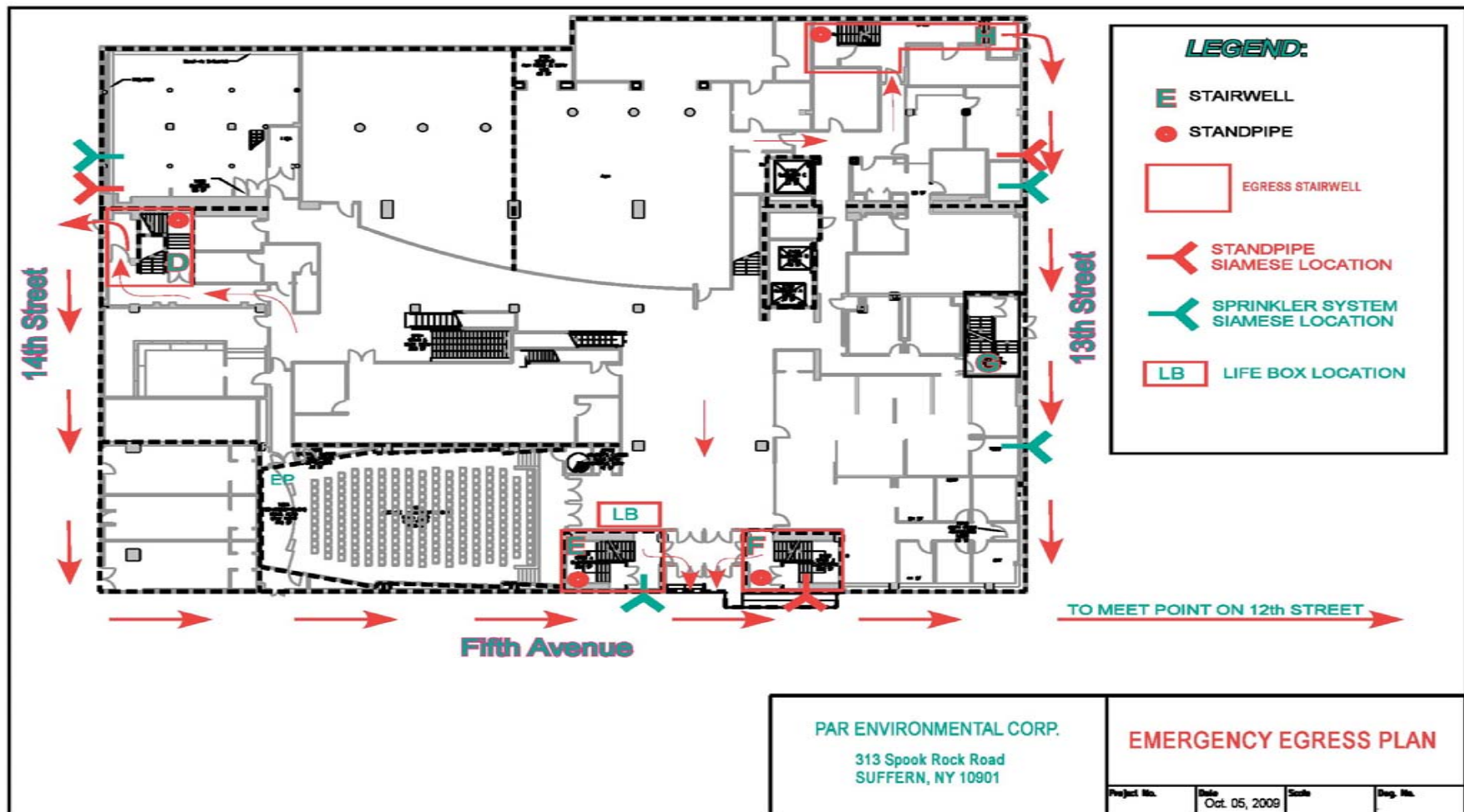




# Demolition and Abatement Approach

- To protect pedestrians and adjacent properties, there will be an 8-foot high plywood construction fence perimeter and a 10-foot lighted sidewalk bridge with full height scaffolding and debris netting installed as required.
- A professional engineer will file a Site Safety Logistics Plan, Sequential Demolition Plan and Equipment Use Permit with calculations for DOB permitting.
- Monthly rodent control will be scheduled.
- DEP required noise mitigation plan is on site for review by DEP.
- As a Dust Mitigation Plan, PAR will utilize water for dust suppression during all demolition activities.

# Emergency Egress Plan

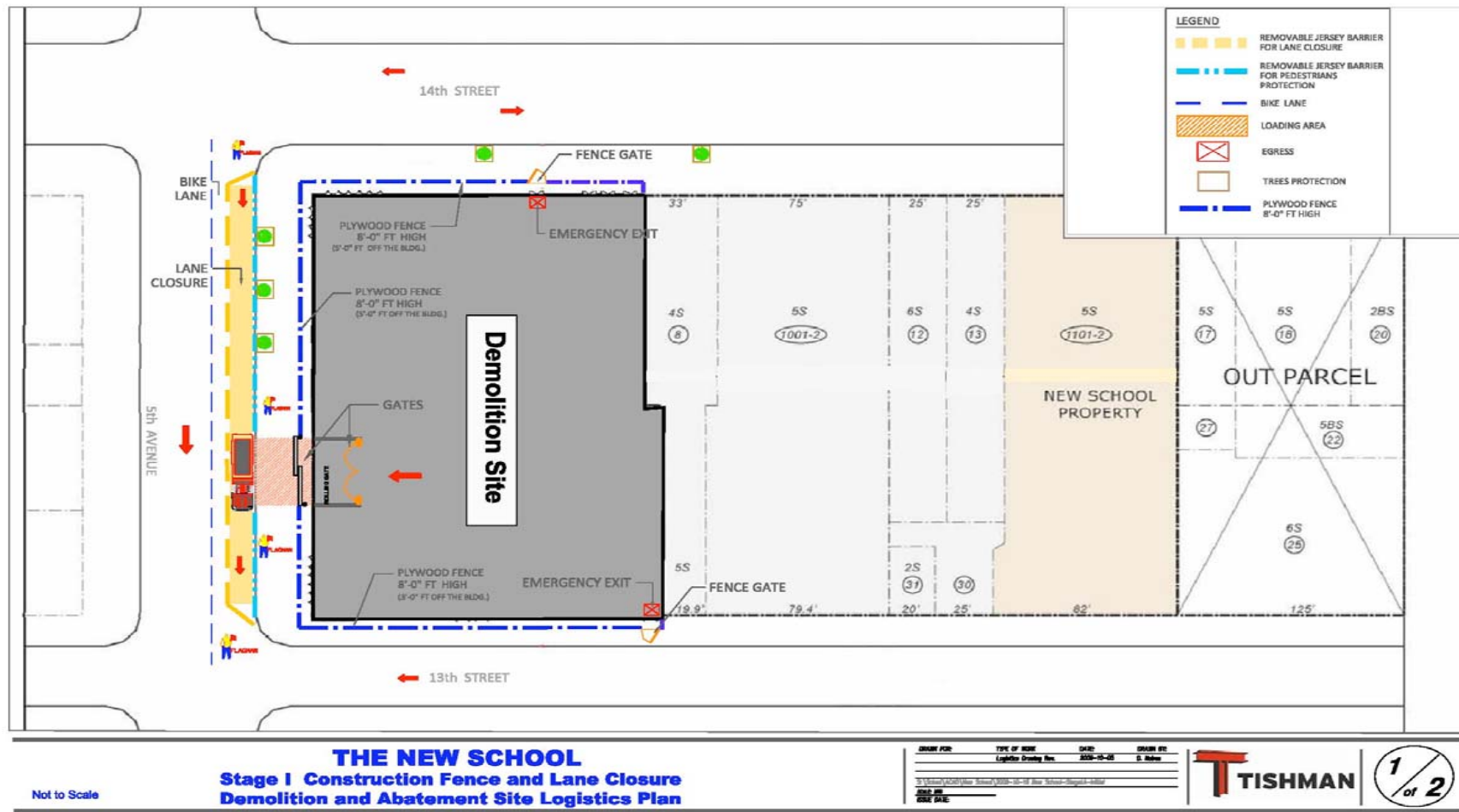


# Abatement Procedures



# Demolition and Abatement Site Logistics Plan

## Construction Fence and Lane Closure





# Demolition and Abatement Site Logistics Plan

## Sidewalk Bridge and Scaffolding

